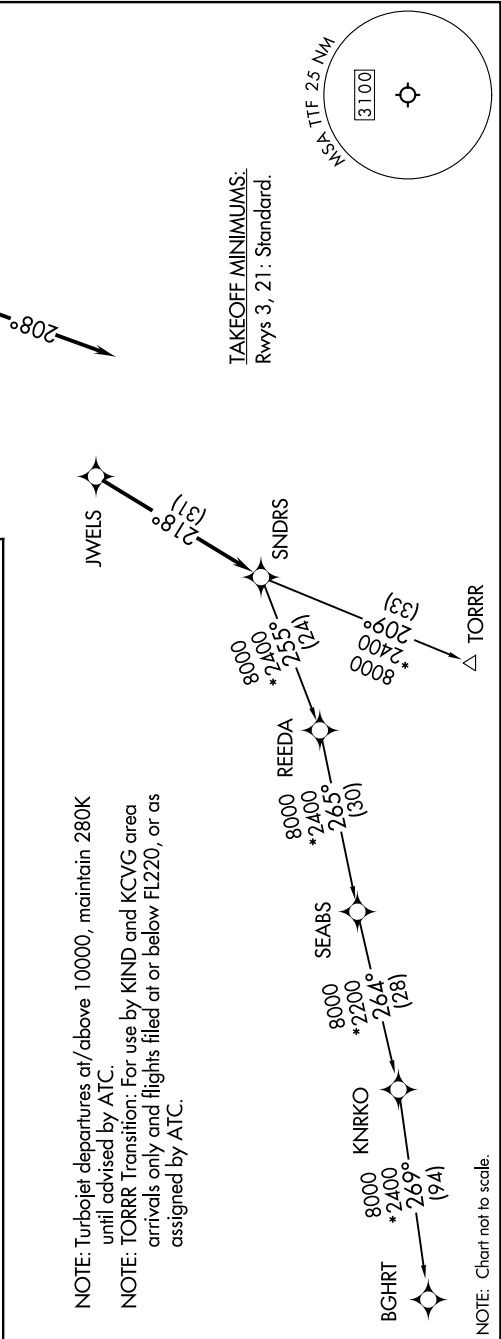


EC-1, 31 OCT 2024 to 28 NOV 2024

<p>DEPARTURE ROUTE DESCRIPTION</p> <p><u>TAKEOFF RUNWAY 3</u>: Climb on heading 027° or as assigned by ATC, thence....</p> <p><u>TAKEOFF RUNWAY 21</u>: Climb on heading 208° or as assigned by ATC, thence....</p> <p>....for RADAR vectors to JWELS, then on track 218° to SNDRS, then on (transition). Maintain ATC assigned altitude, expect filed altitude 10 minutes after departure.</p> <p><u>BGHR T TRANSITION (SNDRS3.BGHR T)</u>: <u>TORR T TRANSITION (SNDRS3.TORR T)</u>:</p>	<p>TOP ALTITUDE: ASSIGNED BY ATC</p> <p>RNAV-1 DME/DME/IRU or GPS. RADAR required.</p> <p style="text-align: center;">N</p>
---	--



EC-1, 31 OCT 2024 to 28 NOV 2024