

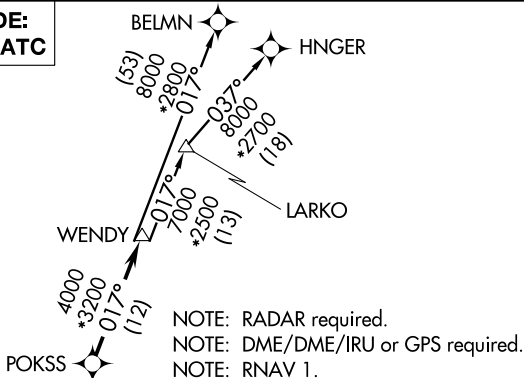
(WENDY3.WENDY) 23166

# WENDY THREE DEPARTURE (RNAV)

UNIVERSITY OF OKLAHOMA WESTHEIMER (OUN)  
AL-5672 (FAA) NORMAN, OKLAHOMA

AWOS-3PT  
119.55  
GND CON  
121.6  
WESTHEIMER TOWER ★  
118.0  
OKE CITY DEP CON  
120.45 288.325

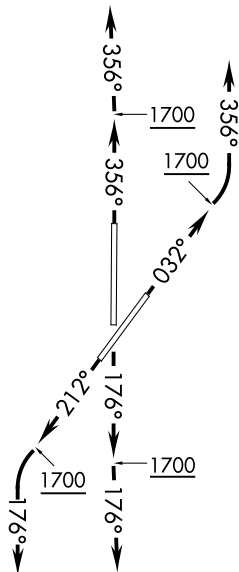
**TOP ALTITUDE:  
ASSIGNED BY ATC**



NOTE: RADAR required.  
NOTE: DME/DME/IRU or GPS required.  
NOTE: RNAV 1.

### TAKEOFF MINIMUMS

Rwys 3, 18, 21, 36: Standard with minimum climb of 500' per NM to 1700.



NOTE: Chart not to scale.

### DEPARTURE ROUTE DESCRIPTION

**TAKEOFF RUNWAY 3:** Climb heading 032° to 1700, then left turn heading 356° or as assigned by ATC, expect RADAR vectors to POKSS, thence . . .

**TAKEOFF RUNWAY 18:** Climb heading 176° to 1700, then heading 176° or as assigned by ATC, expect RADAR vectors to POKSS, thence . . .

**TAKEOFF RUNWAY 21:** Climb heading 212° to 1700, then left turn heading 176° or as assigned by ATC, expect RADAR vectors to POKSS, thence . . .

**TAKEOFF RUNWAY 36:** Climb heading 356° to 1700, then heading 356° or as assigned by ATC, expect RADAR vectors to POKSS, thence . . .

. . . on track 017° to WENDY, then on (transition). Maintain 3000 or as assigned by ATC. Expect filed altitude 10 minutes after departure.

BELMN TRANSITION (WENDY3.BELMN)

HNGER TRANSITION (WENDY3.HNGER)

LARKO TRANSITION (WENDY3.LARKO)

# WENDY THREE DEPARTURE (RNAV)

(WENDY3.WENDY) 07DEC17

NORMAN, OKLAHOMA  
UNIVERSITY OF OKLAHOMA WESTHEIMER (OUN)

SC-1, 31 OCT 2024 to 28 NOV 2024

SC-1, 31 OCT 2024 to 28 NOV 2024