

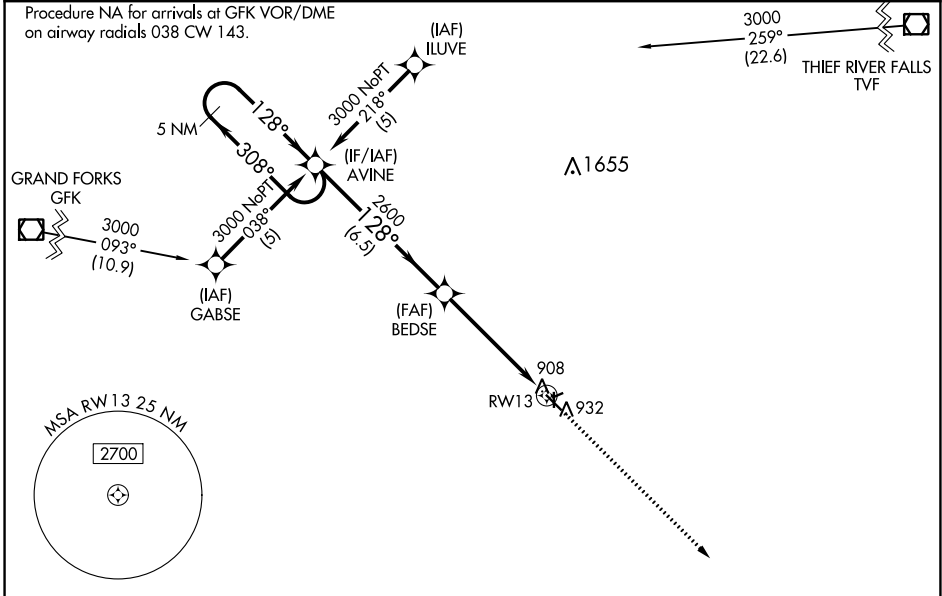
WAAS CH <b>72704</b> <b>W13A</b>	APP CRS <b>128°</b>	Rwy Idg TDZE Apt Elev	<b>4300</b> <b>896</b> <b>900</b>
----------------------------------------	------------------------	-----------------------------	-----------------------------------------

# RNAV (GPS) RWY 13

CROOKSTON MUNI/KIRKWOOD FLD (CKN)

**RNP APCH.**  
 ▼ Baro-VNAV NA when using Grand Forks altimeter setting. For uncompensated Baro-VNAV systems, LNAV/VNAV NA below -16°C (4°F) or above 54°C (130°F). When local altimeter setting not received, use Grand Forks altimeter setting and increase LPV DA to 1208 feet and LNAV/VNAV DA to 1272 feet; increase all MDA's 80 feet and Circling Cat C visibility ¼ SM. Circling Rwy's 6, 24, 17, 35 NA at night.  
 MISSED APPROACH: Climb to 3000 direct FAPVU and hold.

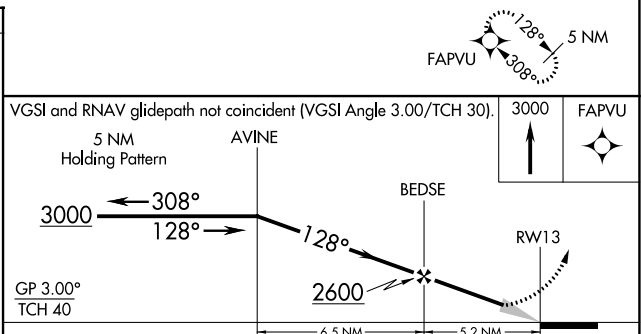
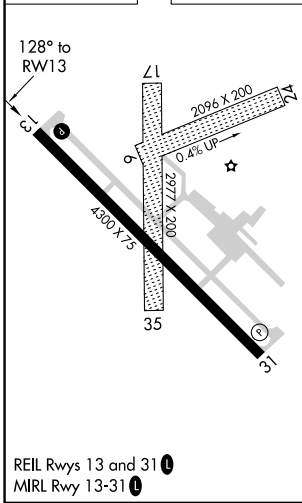
AWOS-3 <b>126.425</b>	GRAND FORKS APP CON ★ <b>118.1 318.1</b>	UNICOM <b>122.7 (CTAF) ①</b>
--------------------------	---------------------------------------------	---------------------------------



NC-1, 31 OCT 2024 to 28 NOV 2024

NC-1, 31 OCT 2024 to 28 NOV 2024

ELEV 900	TDZE 896
----------	----------



CATEGORY	A	B	C	D
LPV DA	1146-1	250 (300-1)		NA
LNAV/VNAV DA	1210-1	314 (400-1)		NA
LNAV MDA	1360-1	464 (500-1)	1360-1¼ 464 (500-1¼)	NA
CIRCLING	1360-1	460 (500-1)	1480-1½ 580 (600-1½)	NA