

VOR/DME GLH <b>114.25</b> Chan <b>89</b> (Y)	APP CRS <b>094°</b>	Rwy Idg TDZE Apt Elev <b>N/A</b> <b>N/A</b> <b>126</b>
--	------------------------	---

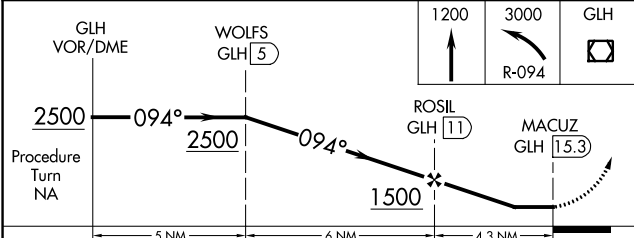
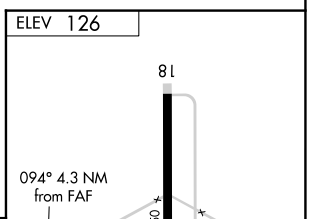
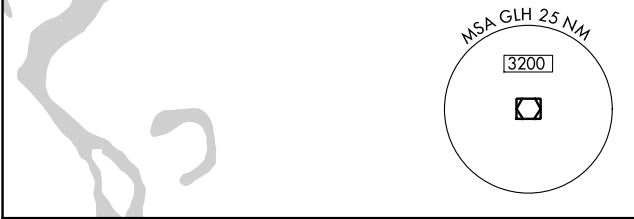
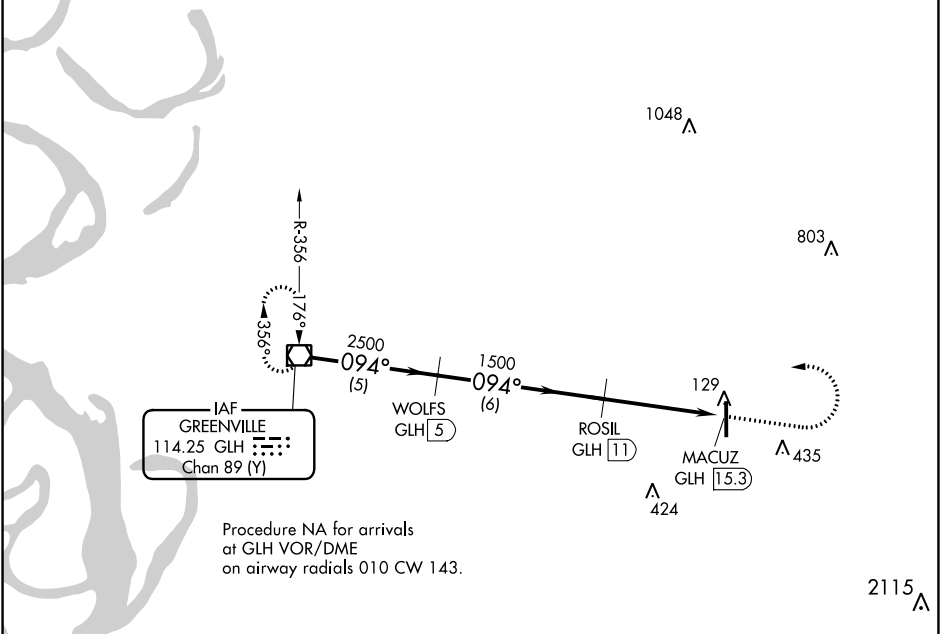
# VOR/DME-B

INDIANOLA MUNI (IDL)

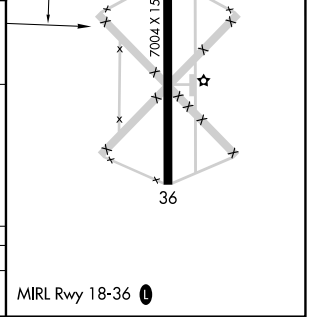
**▲** NA Use Greenville altimeter setting, when not received, use Greenwood altimeter setting and increase all MDA 40 feet, Circling Cat C/D visibility ¼ SM. Circling to Rwy 18 NA at night. Helicopter visibility reduction below 1 SM NA.

MISSED APPROACH: Climb to 1200 then climbing left turn to 3000 on R-094 to GLH VOR/DME and hold.

GLH ASOS <b>125.525</b>	MEMPHIS CENTER <b>135.875 269.35</b>	UNICOM <b>122.8</b> (CTAF) <b>0</b>
----------------------------	---	--



CATEGORY	A	B	C	D
CIRCLING	580-1 454 (500-1)	600-1 474 (500-1)	840-2 714 (800-2)	840-2¼ 714 (800-2¼)



SC-4, 31 OCT 2024 to 28 NOV 2024

SC-4, 31 OCT 2024 to 28 NOV 2024