

WAAS CH <b>69332</b> W36A	APP CRS <b>001°</b>	Rwy Idg TDZE <b>1734</b> Apt Elev <b>1737</b>
---------------------------------	------------------------	---

# RNAV (GPS) RWY 36

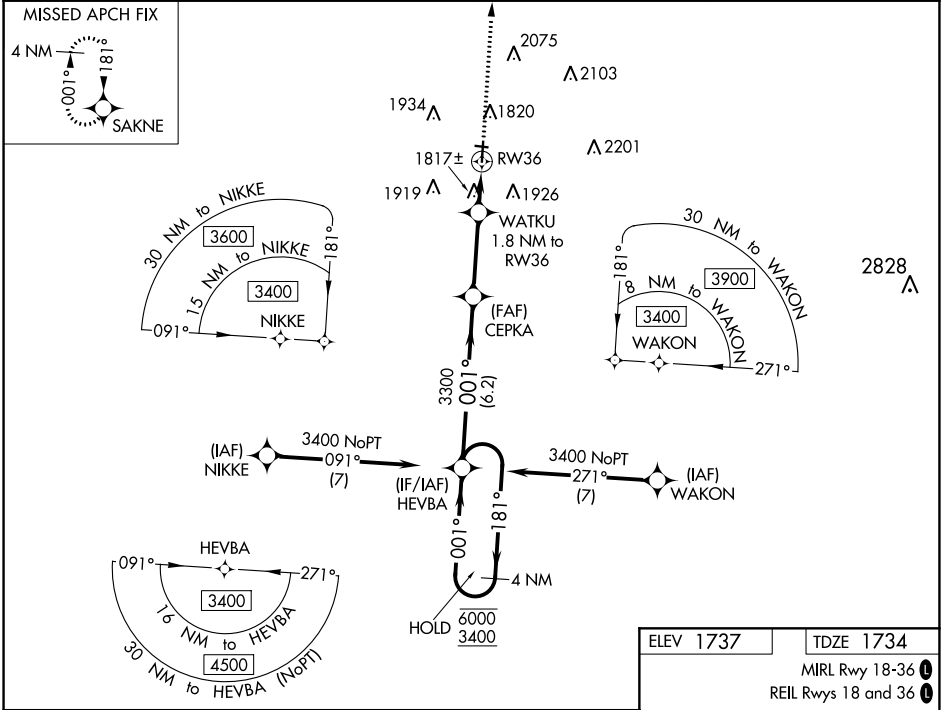
PIPESTONE MUNI (PQN)

RNP APCH-GPS.

**▽** Circling NA to Rwy's 9 and 27. For uncompensated Baro-VNAV systems, LNAV/VNAV NA below -18°C or above 54°C.

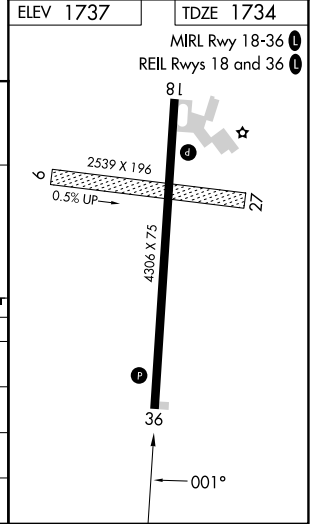
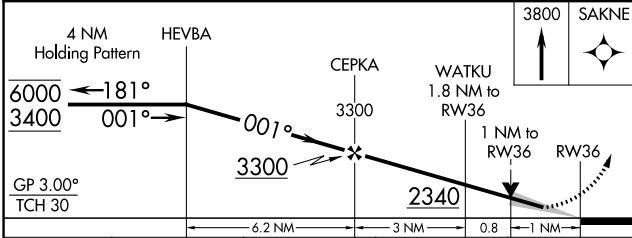
**▲** MISSED APPROACH: Climb to 3800 direct SAKNE and hold.

AWOS-3PT <b>118.375</b>	MINNEAPOLIS CENTER <b>132.05 317.4</b>	GCO <b>121.725</b>	UNICOM <b>122.8 (CTAF) 0</b>
----------------------------	---	-----------------------	---------------------------------



NC-1, 31 OCT 2024 to 28 NOV 2024

NC-1, 31 OCT 2024 to 28 NOV 2024



CATEGORY	A	B	C	D
LPV DA		1934-1 200 (200-1)		NA
LNAV/ VNAV DA		1984-1 250 (300-1)		NA
LNAV MDA		2080-1 346 (400-1)		NA
<b>C</b> CIRCLING	2200-1 463 (500-1)	2280-1 543 (600-1)	2280-1½ 543 (600-1½)	NA