

VORTAC MAF 114.8 Chan 95	APP CRS 231°	Rwy Idg TDZE Apt Elev N/A N/A 3004
--	------------------------	--

VOR-A

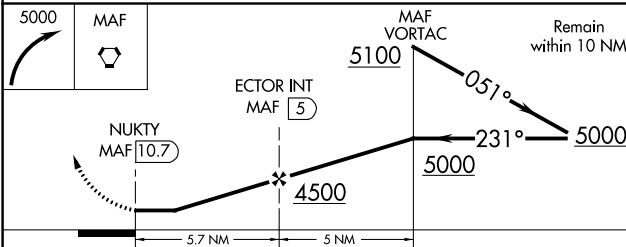
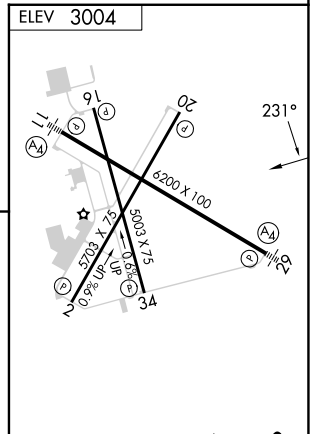
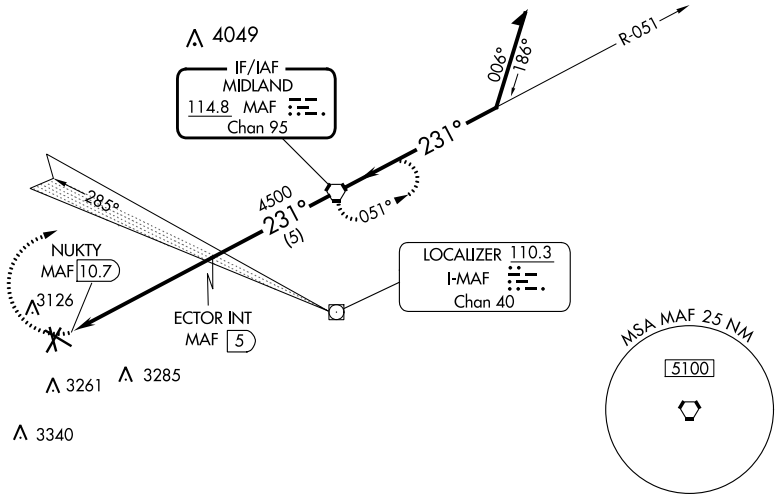
ODESSA-SCHLEMEYER FLD (ODO)

⚠ Circling NA south of Rwy 2 and 34. When local altimeter setting not received use Midland Intl Air and Space Port altimeter setting and increase all MDA 60 feet, increase Circling Cat C visibility ¼ SM.

⚠ MISSED APPROACH: Climbing right turn to 5000 direct MAF VORTAC and hold.

ASOS 119.275	MIDLAND APP CON★ 124.6 256.875	CLNC DEL 121.7	UNICOM 123.0 (CTAF)
------------------------	--	--------------------------	-------------------------------

NoPT for arrival on MAF VORTAC airway radials 357 CW 102.



CATEGORY	A		B		C	D	FAF to MAP 5.7 NM					
	3460-1 456 (500-1)		3600-1½ 596 (600-1½)		3600-2 596 (600-2)		Knots	60	90	120	150	180
CIRCLING	3460-1 456 (500-1)		3600-1½ 596 (600-1½)		3600-2 596 (600-2)		Min:Sec	5:42	3:48	2:51	2:17	1:54

VOR-A

SC-3, 31 OCT 2024 to 28 NOV 2024

SC-3, 31 OCT 2024 to 28 NOV 2024