

| | | | |
|--|------------------------|-----------------------------|---|
| WAAS CH 63124 W05A | APP CRS 050° | Rwy Idg TDZE Apt Elev | 5001 847 847 |
|--|------------------------|-----------------------------|---|

RNAV (GPS) RWY 5

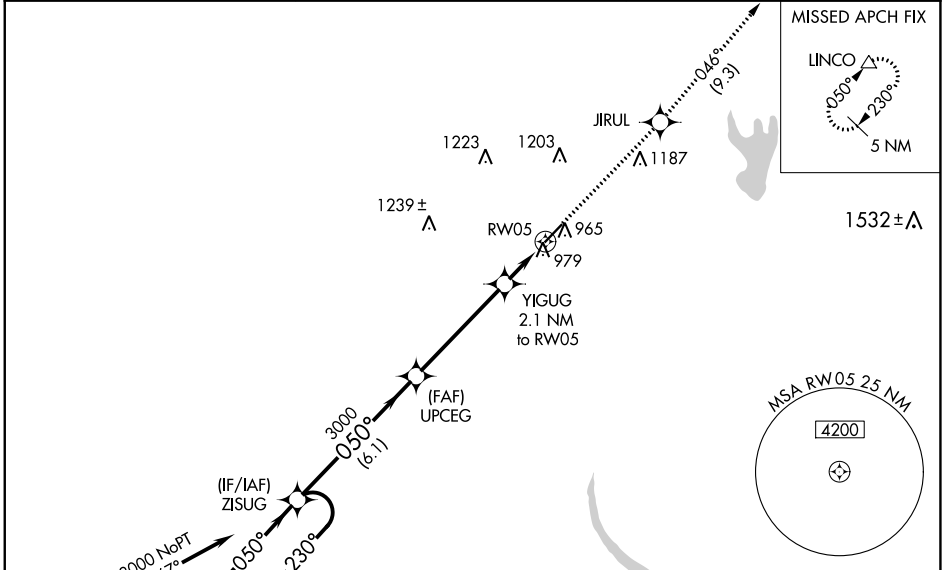
SHELBY-CLEVELAND COUNTY RGNL (EHO)

RNP APCH.

▽ Baro-VNAV NA when using Charlotte altimeter setting. For uncompensated Baro-VNAV systems, LNAV/VNAV NA below -16°C or above 38°C. Rwy 5 helicopter visibility reduction below 3/4 SM NA. When local altimeter setting not received, use Charlotte altimeter setting and increase all DA 88 feet and all MDA 100 feet; increase LPV all Cats visibility 1/8 SM and LNAV/VNAV all Cats, LNAV Cat C/D visibility 1/4 SM.

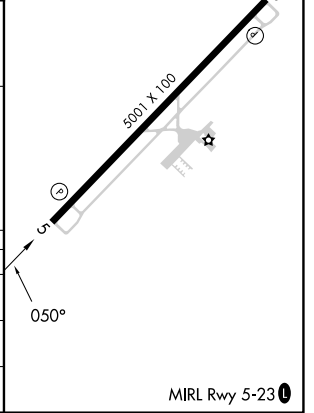
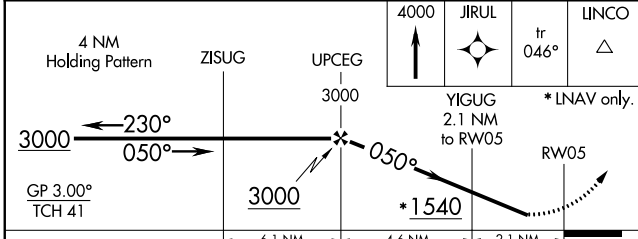
⚠ MISSED APPROACH: Climb to 4000 direct JIRUL and on track 046° to LINCO and hold.

| | | |
|--------------------------|--|---------------------------------|
| AWOS-3 118.425 | CHARLOTTE APP CON 120.05 257.2 | UNICOM 122.8 (CTAF) 0 |
|--------------------------|--|---------------------------------|



SPARTANBURG SPA (IAF) Procedure NA for arrivals on SPA VORTAC airway radials 360 CW 103.

| | |
|----------|----------|
| ELEV 847 | TDZE 847 |
|----------|----------|



| CATEGORY | A | B | C | D |
|--------------|--------------------|---|----------------------------|---|
| LPV DA | 1097-1 | | 250 (300-1) | |
| LNAV/VNAV DA | 1173-1 1/8 | | 326 (400-1 1/8) | |
| LNAV MDA | 1240-1 393 (400-1) | | 1240-1 1/8 393 (400-1 1/8) | |

SE-2, 31 OCT 2024 to 28 NOV 2024

SE-2, 31 OCT 2024 to 28 NOV 2024