

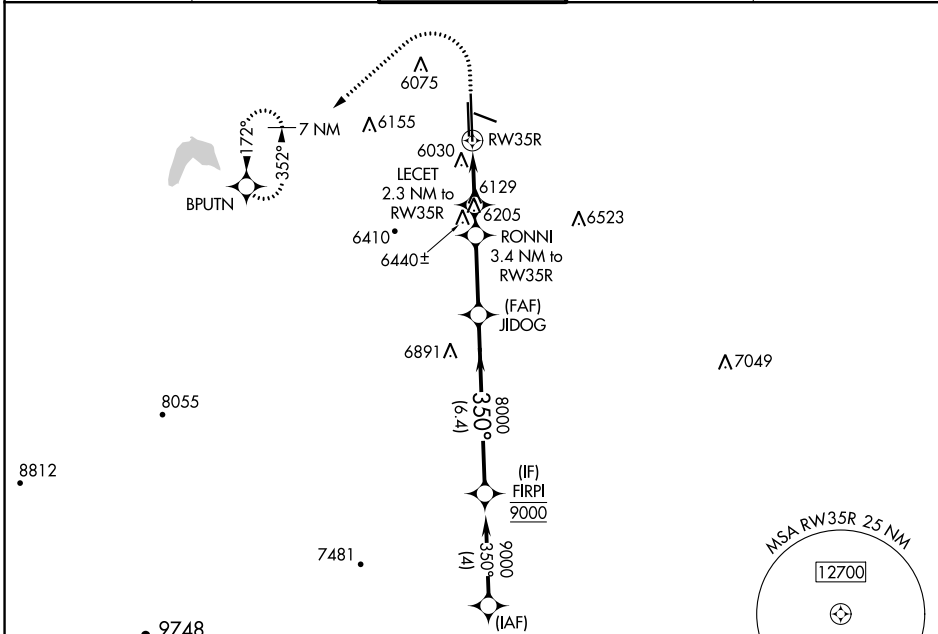
WAAS CH <b>40339</b> <b>W35A</b>	APP CRS <b>350°</b>	Rwy Idg TDZE Apt Elev	<b>10001</b> <b>5885</b> <b>5885</b>
--	------------------------	-----------------------------	--

# RNAV (GPS) RWY 35R

CENTENNIAL (APA)

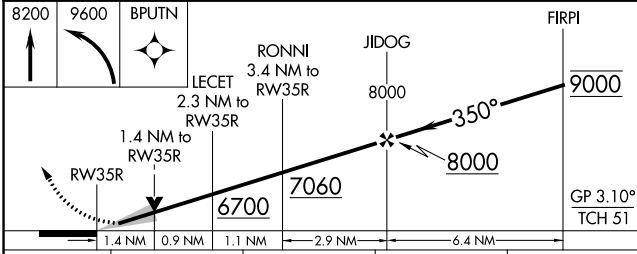
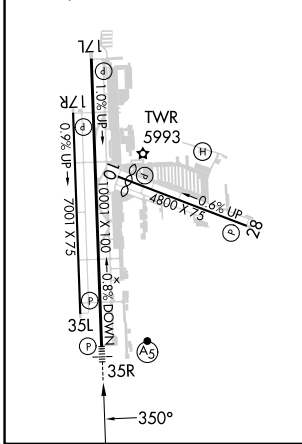
RNP APCH.	MALSRL	MISSED APPROACH: (Do not exceed 240K until BPUTN) Climb to 8200 then climbing left turn to 9600 direct BPUTN and hold.
<p>▼ Circling Rwy 35L NA at night. For uncompensated Baro-VNAV systems, LNAV/VNAV NA below -21°C or above 54°C. For inop ALS, increase LNAV Cats C/D visibility to 1 3/8 SM.</p> <p>▲</p>		

ATIS <b>120.3</b>	DENVER APP CON <b>132.75 269.3</b>	<b>CENTENNIAL TOWER</b> <b>118.9</b>	GND CON <b>121.8</b>	CLNC DEL <b>128.6</b>
----------------------	---------------------------------------	---	-------------------------	--------------------------



ELEV 5885	TDZE 5885
-----------	-----------

MIRL all Rwys  
REIL Rwys 17R, 28, and 35L



CATEGORY	A	B	C	D
LPV DA		6085-1/2	200 (200-1/2)	
LNAV/VNAV DA		6324-3/4	439 (500-3/4)	
LNAV MDA	6380-1/2	495 (500-1/2)	6380-1	495 (500-1)
<input checked="" type="checkbox"/> CIRCLING	6400-1 515 (600-1)	6540-1 655 (700-1)	6740-2 1/2 855 (900-2 1/2)	6760-2 3/4 875 (900-2 3/4)

SW-1, 31 OCT 2024 to 28 NOV 2024

SW-1, 31 OCT 2024 to 28 NOV 2024