

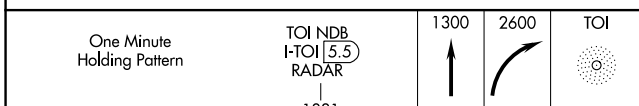
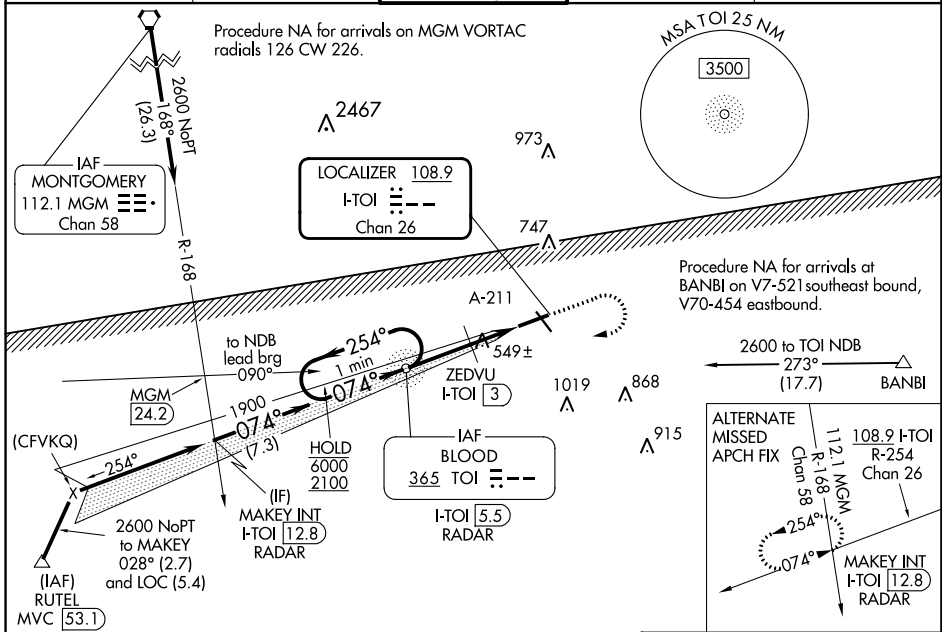
LOC/DME I-TOI 108.9 Chan 26	APP CRS 074°	Rwy Idg TDZE Apt Elev	6197 389 397
--	------------------------	-----------------------------	---

ILS or LOC RWY 7

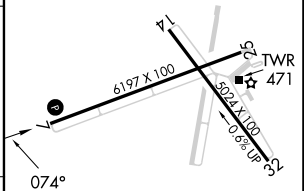
TROY MUNI AT N KENNETH CAMPBELL FLD (TOI)

ADF required.		MISSED APPROACH: Climb to 1300 then climbing right turn to 2600 direct TOI NDB/I-TOI 5.5 DME/RADAR and hold.		
Circling Rwy 14, 32 NA at night.				

ATIS 120.925	CAIRNS APP CON ★ 121.1 319.25	TROY TOWER ★ 124.3 (CTAF) 306.9	GND CON 121.9 294.7	UNICOM 122.8
------------------------	---	---	-------------------------------	------------------------



ELEV 397	TDZE 389
----------	----------



6000	← 254°	1831	ZEDVU I-TOI 3	TOI
2100	→ 074°		I-TOI 2.3	
		1900		I-TOI 1.1
		1000		
			2.5 NM	0.7 NM
				1.2 NM

CATEGORY	A	B	C	D
S-ILS 7		635-7/8	246 (300-7/8)	
S-LOC 7	1000-1	611 (700-1)	1000-1 3/4	611 (700-1 3/4)
CIRCLING	1000-1	603 (700-1)	1300-2 3/4 903 (1000-2 3/4)	1380-3 983 (1000-3)
ZEDVU FIX MINIMUMS (DME REQUIRED)				
S-LOC 7	800-1	411 (500-1)	800-1 1/2	411 (500-1 1/2)
CIRCLING	1000-1	603 (700-1)	1300-2 3/4 903 (1000-2 3/4)	1380-3 983 (1000-3)

MIRL Rwy 7-25 and 14-32	FAF to MAP 4.4 NM				
Knots	60	90	120	150	180
Min:Sec	4:24	2:56	2:12	1:46	1:28

ILS or LOC RWY 7

SE-4, 31 OCT 2024 to 28 NOV 2024

SE-4, 31 OCT 2024 to 28 NOV 2024