

| | | | |
|--|------------------------|-----------------------------|---|
| WAAS CH 56513 W04A | APP CRS 042° | Rwy Idg TDZE Apt Elev | 7099 158 158 |
|--|------------------------|-----------------------------|---|

RNAV (GPS) RWY 4

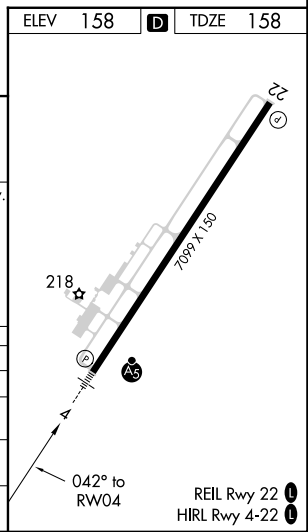
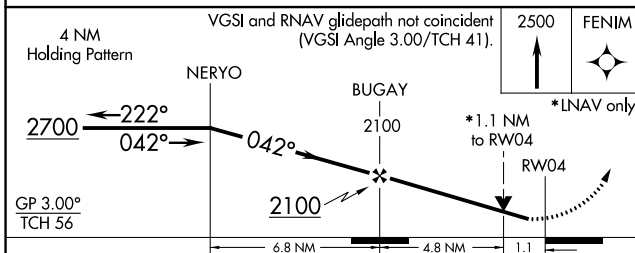
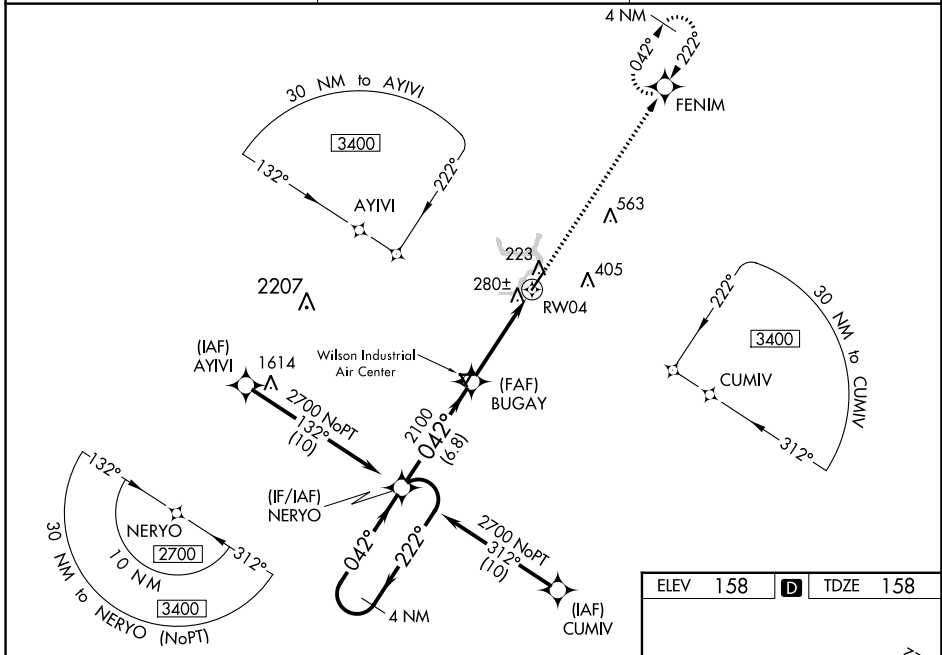
ROCKY MOUNT/WILSON RGNL (R.WI)

⚠ Inop table does not apply to LPV when using local altimeter setting. For uncompensated Baro-VNAV systems, LNAV/VNAV NA below -10°C (14°F) or above 54°C (130°F).
⚠ When local altimeter setting not received, use Wayne Exec Jetport altimeter setting and increase LPV DA to 467; increase LNAV/VNAV DA to 601 and all Cats visibility ¼ mile; increase all MDA 60 feet and LNAV Cats C/D and Circling Cat C visibility ¼ mile.
 For inop MALSR, increase LNAV Cat A/B visibility to 1 mile. DME/DME RNP-0.3 NA.
 Baro-VNAV and VDP NA when using Wayne Exec Jetport altimeter setting.
 Rwy 4 helicopter visibility reduction below ¼ SM NA.

MALSR

MISSED APPROACH:
Climb to 2500 direct FENIM and hold.

| | | |
|------------------------|---|----------------------------------|
| ASOS 118.875 | WASHINGTON CENTER 123.85 279.65 | UNICOM 123.05 (CTAF) ① |
|------------------------|---|----------------------------------|



| CATEGORY | A | B | C | D |
|-------------------|----------------------|----------------------|------------------------|----------------------|
| LPV DA | | 408-¾ | 250 (300-¾) | |
| LNAV/VNAV DA | | 542-¾ | 384 (400-¾) | |
| LNAV MDA | | 560-¾ | 402 (500-¾) | |
| C CIRCLING | 600-1 442 (500-1) | 620-1 462 (500-1) | 720-1½ 562 (600-1½) | 760-2 602 (700-2) |

SE-2, 31 OCT 2024 to 28 NOV 2024

SE-2, 31 OCT 2024 to 28 NOV 2024