

WAAS CH <b>50420</b> <b>W30A</b>	APP CRS <b>297°</b>	Rwy Idg TDZE Apt Elev	<b>3428</b> <b>939</b> <b>940</b>
--	------------------------	-----------------------------	---

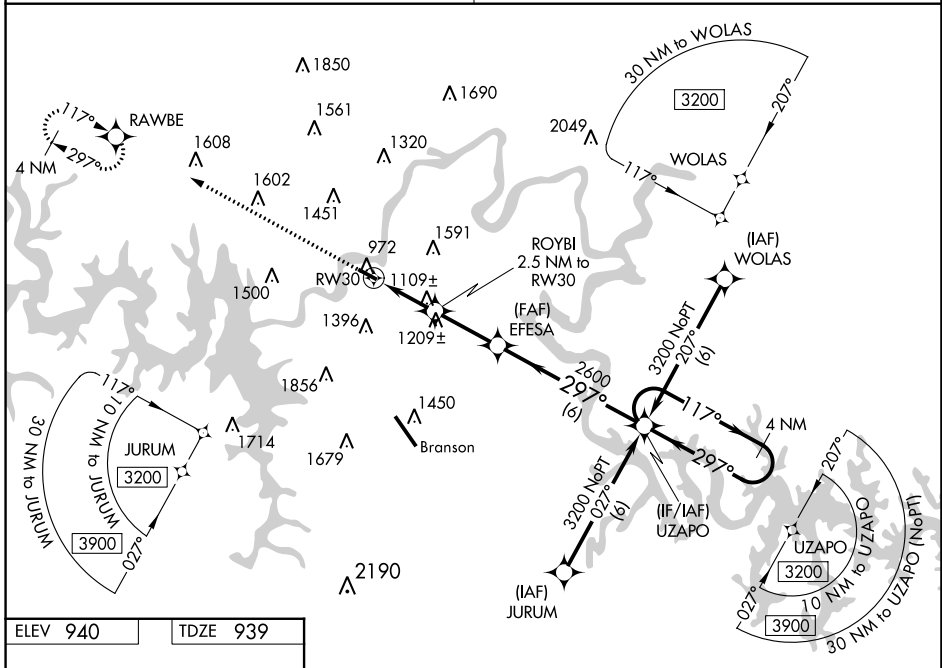
# RNAV (GPS) RWY 30

M GRAHAM CLARK DOWNTOWN (PLK)

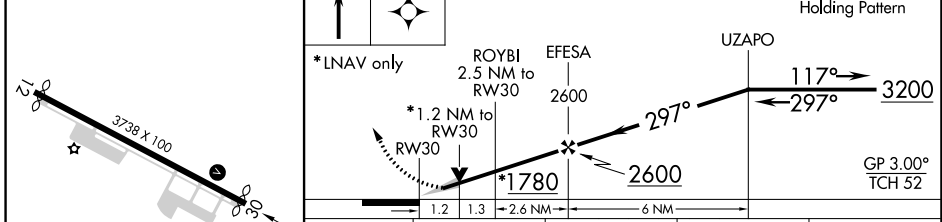
▼ Baro-VNAV NA when using Branson altimeter setting. For uncompensated Baro-VNAV systems, LNAV/VNAV NA below -16°C (4°F) or above 54°C (130°F). DME/DME RNP-0.3 NA. VDP NA with KBBG altimeter setting. Obtain local altimeter setting on CTAF; when not received, use Branson altimeter setting and increase all DA 65 feet and all MDA 80 feet; increase LPV and LNAV/VNAV all Cats visibility ¼ mile.

▲ NA MISSED APPROACH: Climb to 3200 direct RAWBE and hold.

SPRINGFIELD APP CON **126.35** UNICOM **122.7 (CTAF) 0**



ELEV 940	TDZE 939
----------	----------



CATEGORY		A	B	C	D
LPV DA		1189-¾	250 (300-¾)		NA
LNAV/VNAV DA		1224-7/8	285 (300-7/8)		NA
LNAV MDA		1360-1	421 (500-1)		NA
CIRCLING		1560-1	620 (700-1)		NA

REIL Rwy 12 and 30  
MIRL Rwy 12-30

BRANSON, MISSOURI  
Orig-B 24JUL14

36°38'N-93°14'W

M GRAHAM CLARK DOWNTOWN (PLK)  
RNAV (GPS) RWY 30

NC-3, 31 OCT 2024 to 28 NOV 2024

NC-3, 31 OCT 2024 to 28 NOV 2024