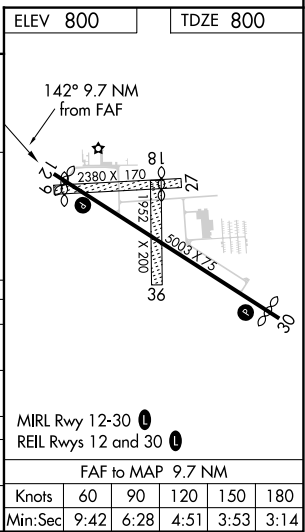
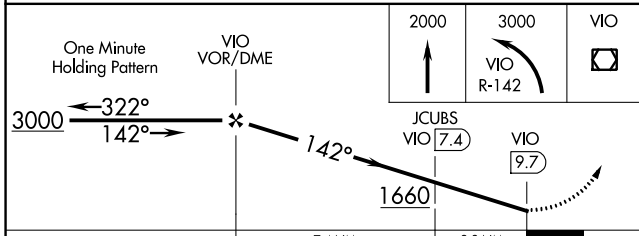
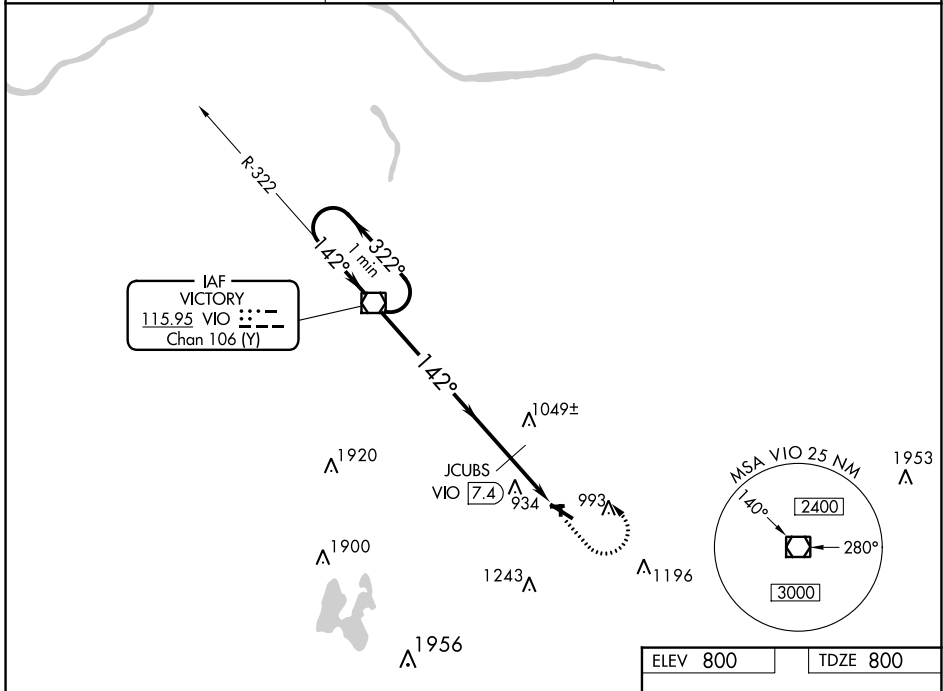


| | | |
|---|------------------------|---|
| VOR/DME VIO 115.95 Chan 106 (Y) | APP CRS 142° | Rwy Idg 4763 TDZE 800 Apt Elev 800 |
|---|------------------------|---|

VOR RWY 12

HASTINGS (9D9)

| | | |
|---|--|-----------------------------------|
| <p>▽ Helicopter visibility reduction below 3/4 SM NA. Use Grand Rapids altimeter setting; when not received, use Ionia altimeter setting and increase all MDA 20 feet. Increase JCUBS DME minimums S-12 Cat C visibility 1/8 mile. Circling NA to Rwy 9, 18, 27, 36.</p> | <p>MISSED APPROACH: Climb to 2000, then climbing left turn to 3000 on VIO VOR/DME R-142 to VIO VOR/DME and hold.</p> | |
| GRR ASOS 118.725 | GREAT LAKES APP CON * 128.4 257.6 | UNICOM 123.075 (CTAF) 0 |



| CATEGORY | A | B | C | D |
|--------------------|-----------------------|-------------------------|-------------------------|----|
| S-12 | 1660-1 860 (900-1) | 1660-1¼ 860 (900-1¼) | 1660-2½ 860 (900-2½) | NA |
| C CIRCLING | 1660-1 860 (900-1) | 1660-1¼ 860 (900-1¼) | 1660-2½ 860 (900-2½) | NA |
| JCUBS DME MINIMUMS | | | | |
| S-12 | 1340-1 | 540 (600-1) | 1340-1½ 540 (600-1½) | NA |
| C CIRCLING | 1380-1 580 (600-1) | 1420-1 620 (700-1) | 1440-1¾ 640 (700-1¾) | NA |