


LOC I-BPM <b>111.9</b>	APP CRS <b>133°</b>	Rwy Idg <b>7500</b>
		TDZE <b>1031</b>
		Apt Elev <b>1031</b>

# ILS or LOC RWY 13

ST CLOUD RGNL (STC)

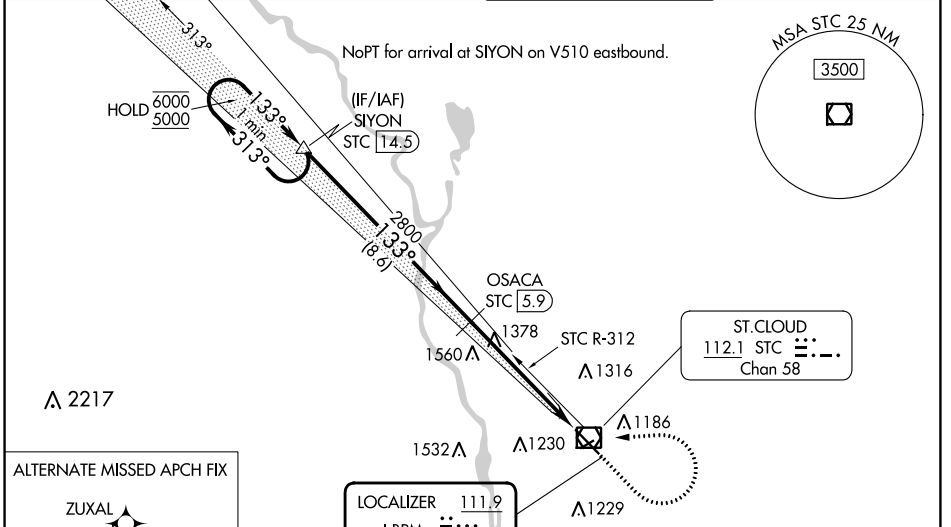
**DME required.**

**⚠** For inop ALS when using Little Falls altimeter setting, increase S-ILS-13 all Cats visibility to 7/8 SM. When local altimeter setting not received, use Little Falls altimeter setting, increase DA to 1307 feet; increase all MDAs 80 feet and S-LOC 13 visibility Cats C and D 1/4 SM, and Circling visibility Cats C and D 1/4 SM. For inop ALS, increase S-LOC 13 Cats C and D visibility to 1 1/4 SM. DME from STC VOR/DME. DME use requires simultaneous reception of I-BPM and STC DME. VDP NA when using Little Falls altimeter setting.

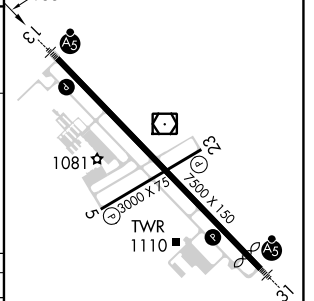
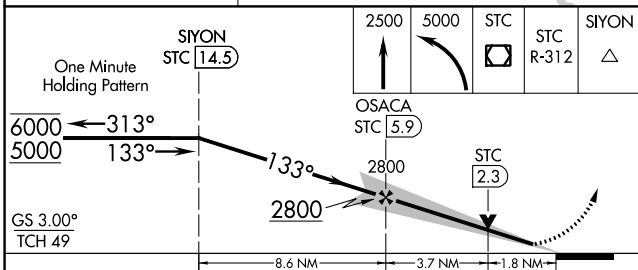
**MALSR**  


**MISSED APPROACH:** Climb to 2500 then climbing left turn to 5000 direct STC VOR/DME and on STC VOR/DME R-312 to SIYON/STC 14.5 DME and hold.

<b>ATIS</b> <b>119.375</b>	<b>MINNEAPOLIS CENTER</b> <b>121.05 235.775</b>	<b>ST. CLOUD TOWER *</b> <b>118.25 (CTAF) 0</b>	<b>GND CON</b> <b>123.75</b>
-------------------------------	--	--	---------------------------------



ELEV 1031	<b>D</b> TDZE 1031
-----------	--------------------



CATEGORY	A	B	C	D
S-ILS 13	1231-1/2 200 (200-1/2)			
S-LOC 13	1640-1/2 609 (700-1/2)		1640-1 3/8 609 (700-1 3/8)	
CIRCLING	1640-1 609 (700-1)		1640-1 3/4 609 (700-1 3/4) 1860-2 3/4 829 (900-2 3/4)	

MIRL Rwy 5-23 0  
HIRL Rwy 13-31 0  
FAF to MAP 5.4 NM

Knots	60	90	120	150	180
Min:Sec	5:24	3:36	2:42	2:10	1:48

NC-1, 31 OCT 2024 to 28 NOV 2024

NC-1, 31 OCT 2024 to 28 NOV 2024