

APP CRS	Rwy Idg	4006
229°	TDZE	488
	Apt Elev	492

RNAV (GPS) RWY 23

BROOKHAVEN-LINCOLN COUNTY (1R7)

RNP APCH - GPS.

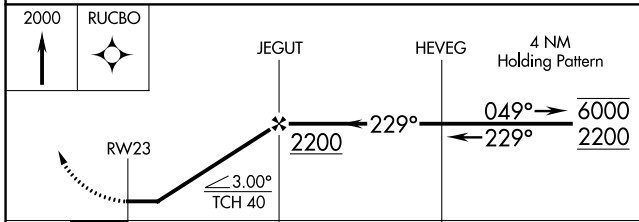
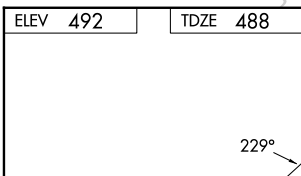
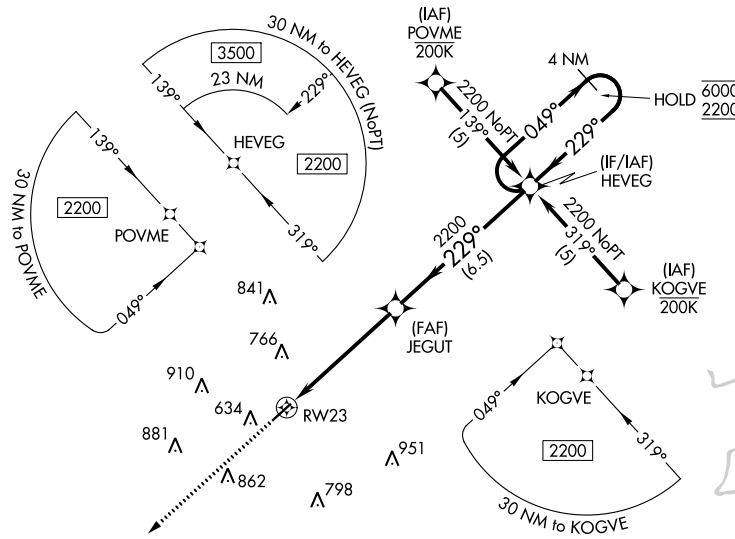
Procedure NA at night. Rwy 23 helicopter visibility reduction below 1 SM NA. When local altimeter setting not received, use McComb altimeter setting and increase all MDAs 80 feet; increase LNAV Cat C and Circling Cat C visibility ¼ SM.

MISSED APPROACH: Climb to 2000 direct RUCBO and hold.

AWOS-3T 118.125	HOUSTON CENTER 126.8 327.8	UNICOM 122.8 (CTAF) 0
---------------------------	--------------------------------------	---------------------------------

SC-4, 31 OCT 2024 to 28 NOV 2024

SC-4, 31 OCT 2024 to 28 NOV 2024



CATEGORY	A	B	C	D
LNAV MDA	900-1	412 (500-1)	900-1½ 412 (500-1½)	NA
CIRCLING	940-1 448 (500-1)	1080-1 588 (600-1)	1220-2 728 (800-2)	NA

ELEV 492	TDZE 488
----------	----------

MIRL Rwy 5-23 0