

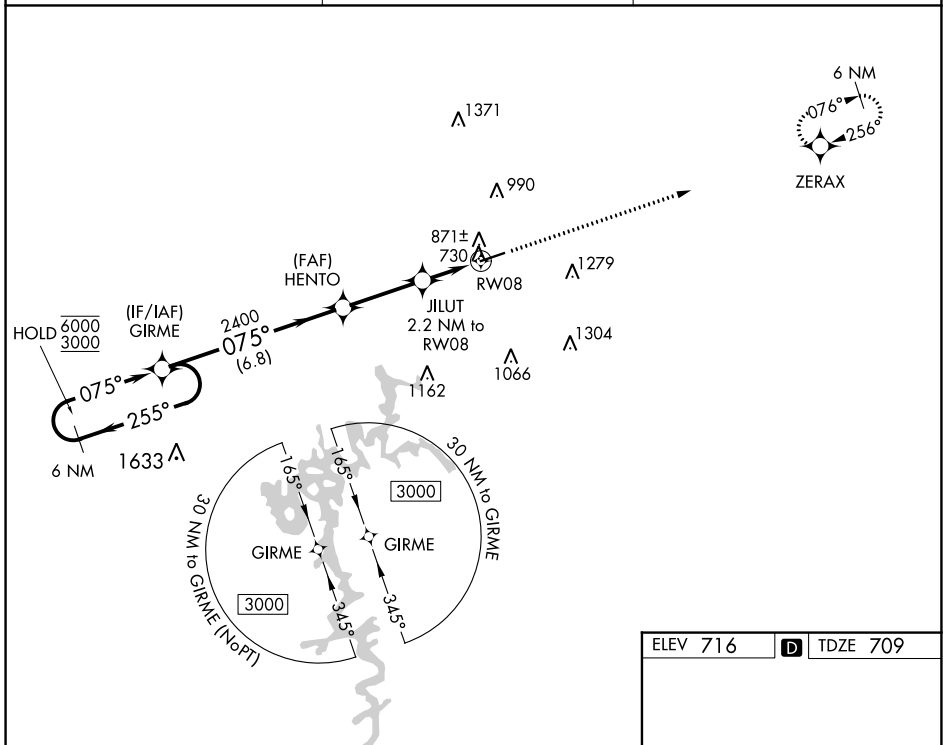
WAAS CH <b>77607</b> <b>W08A</b>	APP CRS <b>075°</b>	Rwy Idg TDZE Apt Elev	<b>5000</b> <b>709</b> <b>716</b>
--	------------------------	-----------------------------	---

# RNAV (GPS) RWY 8

GLASGOW MUNI (GLW)

RNP APCH.	MISSED APPROACH: Climb to 3000 direct ZERAX and hold.
<p>▼ ▲ For uncompensated Baro-VNAV systems, LNAV/VNAV NA below -16°C or above 54°C.</p>	

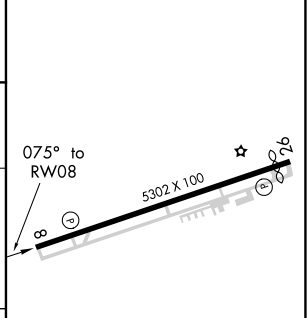
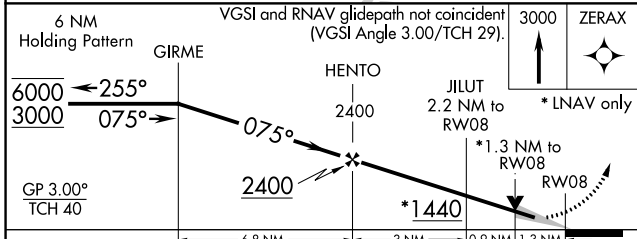
AWOS-3 <b>118.525</b>	MEMPHIS CENTER <b>132.9 290.3</b>	UNICOM <b>122.8</b> (CTAF) <b>1</b>
--------------------------	--------------------------------------	--



SE-1, 31 OCT 2024 to 28 NOV 2024

SE-1, 31 OCT 2024 to 28 NOV 2024

ELEV 716	<b>D</b> TDZE 709
----------	-------------------



CATEGORY		A	B	C	D
LPV	DA	971-1		262 (300-1)	
LNAV/VNAV	DA	1125-1 3/8		416 (500-1 3/8)	
LNAV	MDA	1140-1	431 (500-1)	1140-1 1/4	431 (500-1 1/4)

MIRL Rwy 8-26 **1**  
REIL Rwy 8 and 26 **1**