

WAAS CH 82019 W02A	APP CRS 024°	Rwy Idg 5000 TDZE 890 Apt Elev 892
----------------------------------------	------------------------	---------------------------------------------------------------

RNAV (GPS) RWY 2

NEVADA MUNI (NVD)

RNP APCH - GPS.

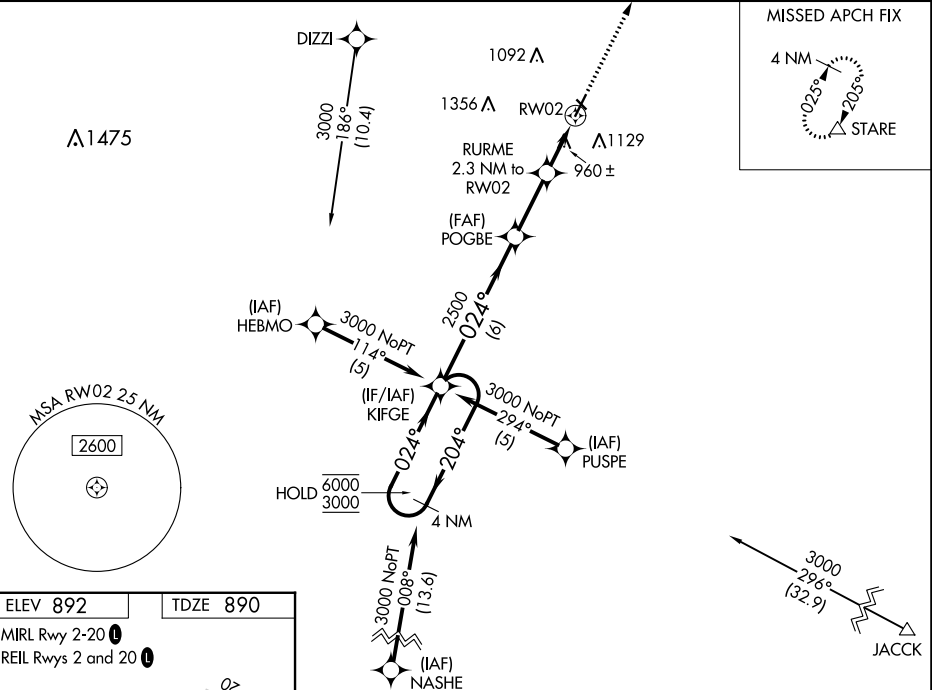
NA Circling NA to Rwy 13 and 31. Baro-VNAV and VDP NA when using Joplin altimeter setting. For uncompensated Baro-VNAV systems, LNAV/VNAV NA below -16°C or above 54°C. When local altimeter setting not received, use Joplin altimeter setting: increase LPV DA to 1200 feet; increase LNAV/VNAV DA to 1329 feet and all visibilities ¼ SM; increase all MDAs 120 feet and LNAV visibility Cat C ¾ SM, and Circling visibility Cat C ¼ SM.

MISSED APPROACH:
Climb to 3000 direct STARE and hold.

AWOS-3PT
119.175

KANSAS CITY CENTER
125.55 327.0

UNICOM
122.8 (CTAF)



MISSED APCH FIX



A1475

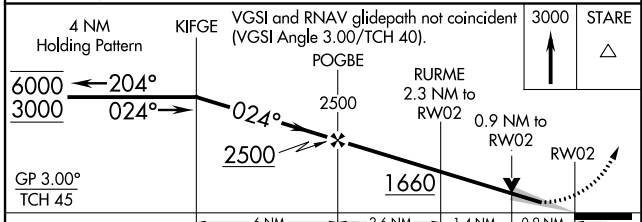
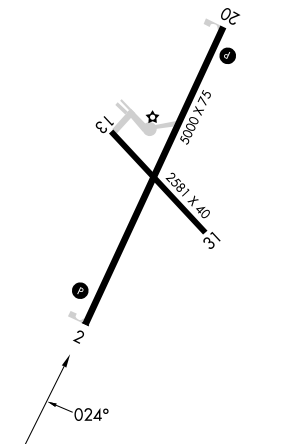
MSA RW02 25 NM

2600

HOLD
6000
3000

ELEV 892 TDZE 890

MIRL Rwy 2-20
REIL Rwy 2 and 20



CATEGORY	A		B		C		D
	1090-1	200 (200-1)	1219-1	329 (400-1)	1220-1	330 (400-1)	NA
LPV DA	1090-1	200 (200-1)	1219-1	329 (400-1)	1220-1	330 (400-1)	NA
LNAV/VNAV DA	1219-1	329 (400-1)	1220-1	330 (400-1)	1440-1	548 (600-1)	NA
LNAV MDA	1220-1	330 (400-1)	1440-1	548 (600-1)	1440-1½	548 (600-1½)	NA
CIRCLING	1260-1 368 (400-1)	1440-1 548 (600-1)	1440-1½ 548 (600-1½)	1440-1½ 548 (600-1½)	1440-1½ 548 (600-1½)	1440-1½ 548 (600-1½)	NA

NC-3, 31 OCT 2024 to 28 NOV 2024

NC-3, 31 OCT 2024 to 28 NOV 2024