

WAAS CH 97342 W18A	APP CRS 175°	Rwy Idg TDZE Apt Elev	4986 916 925
--	------------------------	-----------------------------	---

RNAV (GPS) RWY 18

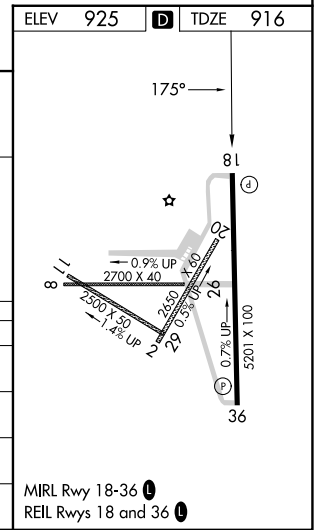
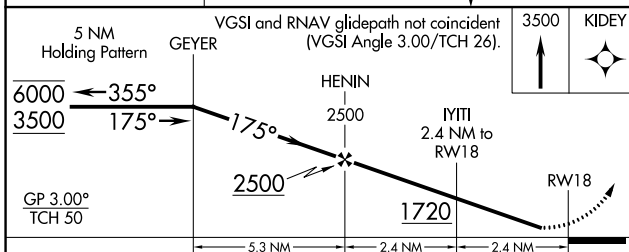
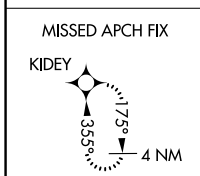
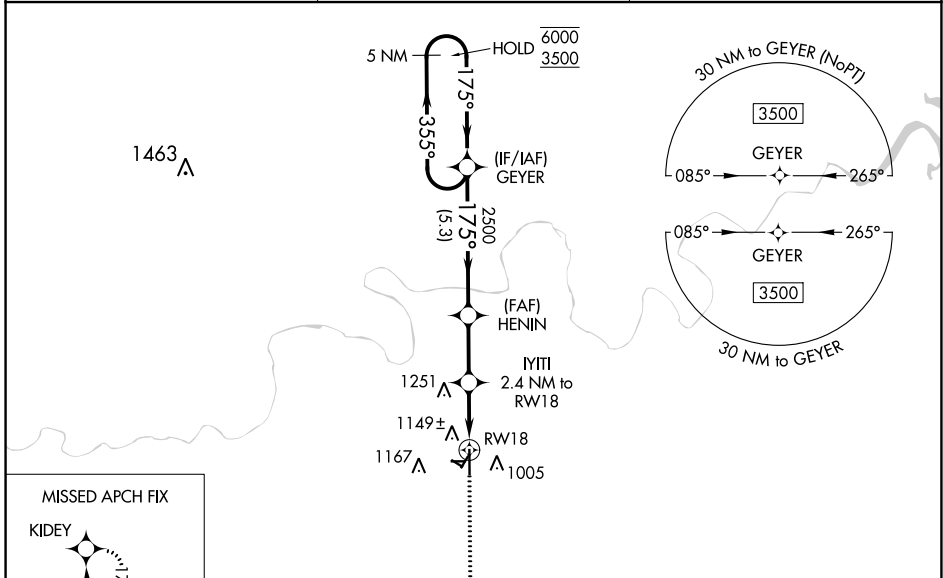
CUSHING MUNI (CUH)

RNP APCH-GPS.

⚠ Rwy 18 helicopter visibility reduction below 3/4 SM NA. For uncompensated Baro-VNAV systems, LNAV/VNAV NA below -16°C or above 54°C. Baro-VNAV and VDP NA when using CQB altimeter setting. When local altimeter setting not received, use CQB altimeter setting and increase LPV DA to 1207 feet and all visibilities 1/8 SM. Increase LNAV/VNAV DA to 1398 feet; increase all MDAs 60 feet and LNAV visibility Cat C/D 1/4 SM. Circling NA to Rwy 2, 8, 11, 20, 26, 29.

MISSED APPROACH: Climb to 3500 direct KIDEY and hold.

AWOS-3PT 118.25	KANSAS CITY CENTER 127.8 319.1	UNICOM 122.8 (CTAF)
---------------------------	--	-------------------------------



CATEGORY	A	B	C	D
LPV DA		1166-3/4	250 (300-3/4)	
LNAV/VNAV DA		1357-1 1/2	441 (500-1 1/2)	
LNAV MDA	1400-1	484 (500-1)	1400-1 3/8	484 (500-1 3/8)
C CIRCLING	1600-1	675 (700-1)	1600-2	1600-2 1/4
			675 (700-2)	675 (700-2 1/4)

MIRL Rwy 18-36 **⓪**
REIL Rwy 18 and 36 **⓪**

SC-1, 31 OCT 2024 to 28 NOV 2024

SC-1, 31 OCT 2024 to 28 NOV 2024