


LOC I-FQR <b>111.1</b>	APP CRS <b>017°</b>	Rwy Idg <b>5000</b>
		TDZE <b>361</b>
		Apt Elev <b>365</b>

# LOC RWY 2

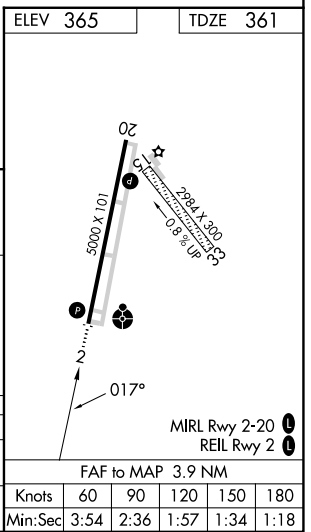
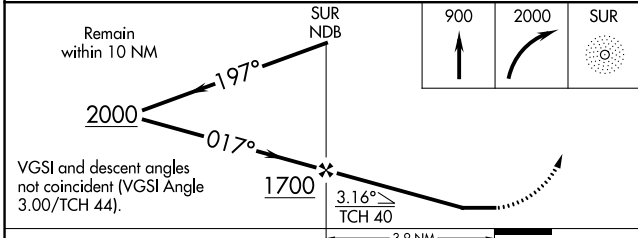
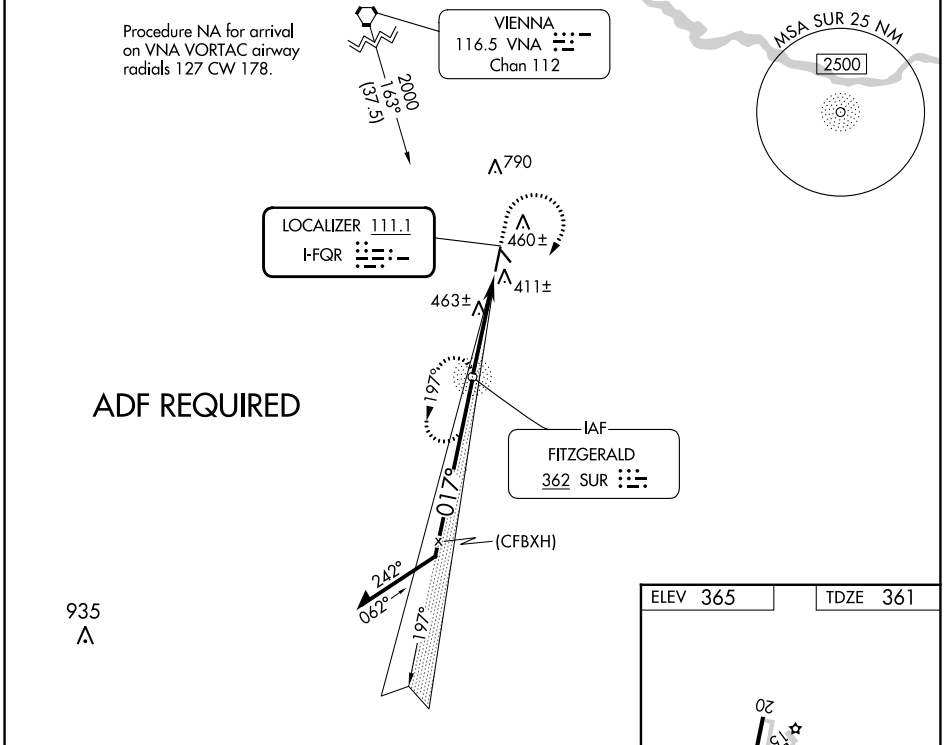
FITZGERALD MUNI (FZG)

**⚠** Circling NA to Rwy 15 and 33. ADF required. When local altimeter setting not received, use Tifton altimeter setting and increase all MDA 60 feet, increase S-LOC 2 Cat C and D visibility  $\frac{1}{8}$  SM and Circling Cat C and D visibility  $\frac{1}{4}$  SM.

**ODALS** 

**MISSED APPROACH:** Climb to 900 then climbing right turn to 2000 direct SUR NDB and hold.

AWOS-3 <b>118.625</b>	JACKSONVILLE CENTER <b>127.575 269.025</b>	UNICOM <b>123.0 (CTAF)</b>
--------------------------	---	-------------------------------



CATEGORY	A	B	C	D
S-LOC 2	720- $\frac{3}{4}$	359 (400- $\frac{3}{4}$ )	720- $\frac{7}{8}$	359 (400- $\frac{7}{8}$ )
<b>C</b> CIRCLING	880-1	515 (600-1)	1160-2 $\frac{1}{4}$ 795 (800-2 $\frac{1}{4}$ )	1160-2 $\frac{1}{2}$ 795 (800-2 $\frac{1}{2}$ )

SE-4, 31 OCT 2024 to 28 NOV 2024

SE-4, 31 OCT 2024 to 28 NOV 2024