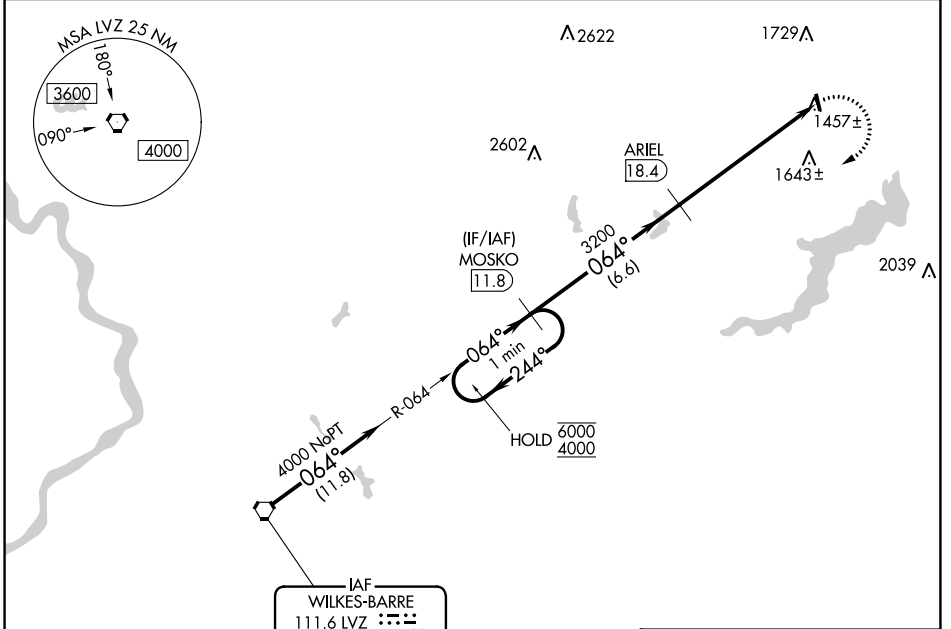


VORTAC LVZ 111.6 Chan 53	APP CRS 064°	Rwy Idg TDZE Apt Elev	N/A N/A 1357
--	------------------------	-----------------------------	---

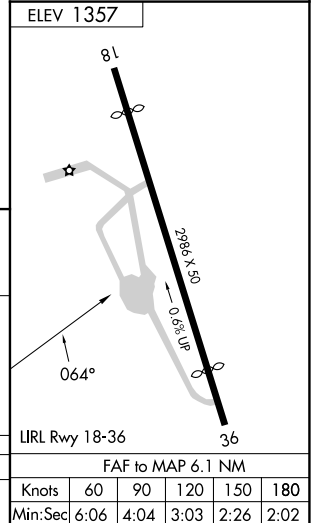
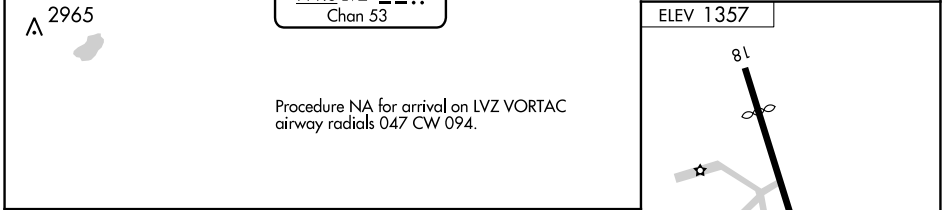
VOR-A
CHERRY RIDGE (N30)

DME required.		MISSED APPROACH: Climbing right turn to 4000 on LVZ VORTAC R-064 to MOSKO 11.8 DME and hold.
▼	Procedure NA at night. Helicopter visibility reduction below 1 SM NA.	
▲ NA	Obtain local altimeter setting on CTAF; when not received, use Wilkes-Barre/Scranton altimeter setting and increase all MDAs 120 feet.	

WILKES-BARRE APP CON 120.95 256.7	UNICOM 122.8 (CTAF)
---	-------------------------------



Procedure NA for arrival on LVZ VORTAC airway radials 047 CW 094.



One Minute Holding Pattern	MOSKO 11.8	4000	LVZ R-064	MOSKO 11.8
6000 ← 244°	→ 064°	064°	3200	
4000				
	6.6 NM	6.1 NM		

CATEGORY	A	B	C	D	FAF to MAP 6.1 NM					
☐ CIRCLING	2180-1¼ 823 (900-1¼)		NA		Knots	60	90	120	150	180
					Min:Sec	6:06	4:04	3:03	2:26	2:02

NE-4, 31 OCT 2024 to 28 NOV 2024

NE-4, 31 OCT 2024 to 28 NOV 2024