

WAAS CH <b>77810</b> <b>W17A</b>	APP CRS <b>162°</b>	Rwy Ldg <b>5003</b> TDZE <b>117</b> Apt Elev <b>121</b>
--	------------------------	---

# RNAV (GPS) RWY 17

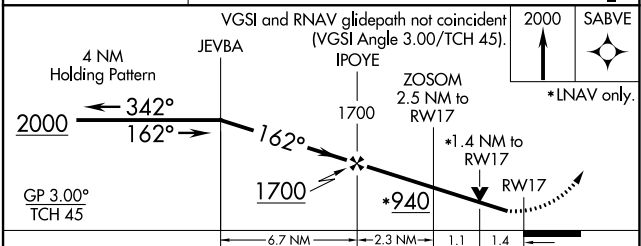
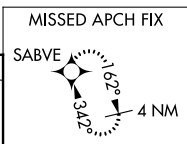
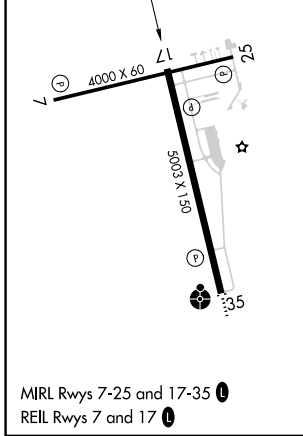
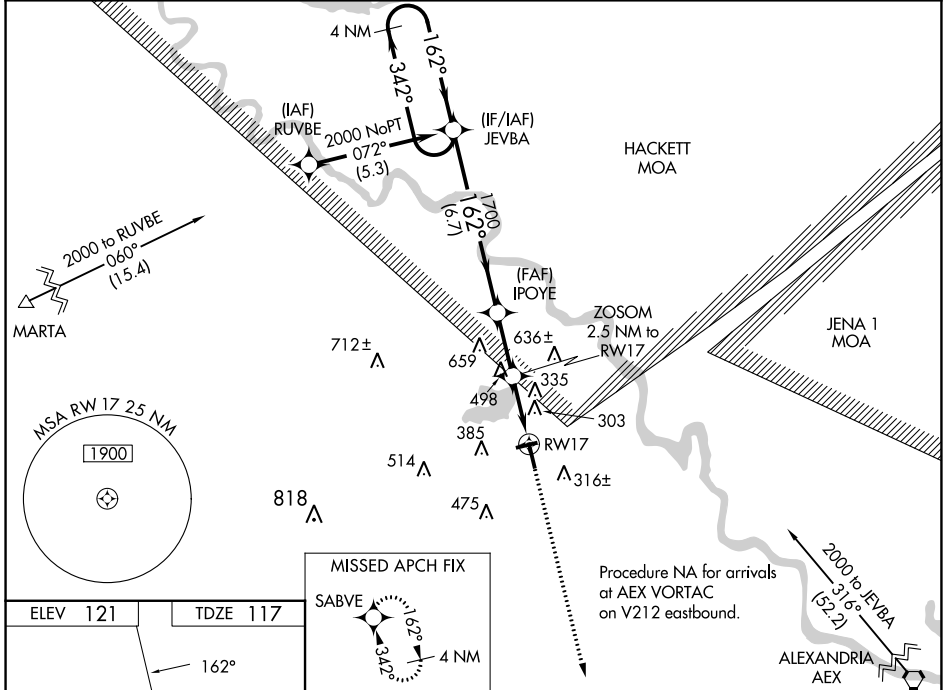
NATCHITOCHES RGNL (IER)

RNP APCH.

▼ For uncompensated Baro-VNAV systems, LNAV/VNAV NA below -15°C or above 54°C.  
 ▲ Visibility reduction by helicopters NA. When local altimeter setting not received, use Alexandria Intl altimeter setting: Increase LPV DA to 458 feet and visibility all Cats 3/8 SM; increase LNAV/VNAV DA to 749 feet and visibility all Cats 3/8 SM; increase all MDA 100 feet and LNAV Cat C visibility 3/8 SM and Circling Cat C visibility 1/2 SM. Baro-VNAV and VDP NA when using Alexandria Intl altimeter setting.

MISSED APPROACH: Climb to 2000 direct SABVE and hold.

AWOS-3 <b>119,025</b>	POLK APP CON <b>125.4 302.2</b>	GCO <b>135,075</b>	UNICOM <b>122.8 (CTAF) 0</b>
--------------------------	------------------------------------	-----------------------	---------------------------------



CATEGORY	A	B	C	D
LPV DA	367-3/4	250 (300-3/4)		NA
LNAV/VNAV DA	658-1 7/8	541 (600-1 1/8)		NA
LNAV MDA	620-1	503 (500-1)	620-1 3/8 503 (500-1 1/8)	NA
CIRCLING	800-1	679 (700-1)	860-2 739 (800-2)	NA