

WAAS CH <b>70515</b> <b>W15A</b>	APP CRS <b>142°</b>	Rwy Idg TDZE <b>970</b> Apt Elev <b>970</b>	<b>5500</b>
--	------------------------	---	-------------

# RNAV (GPS) RWY 15

NEWNAN COWETA COUNTY (CCO)

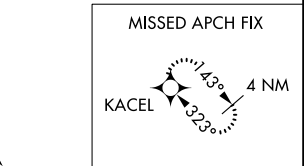
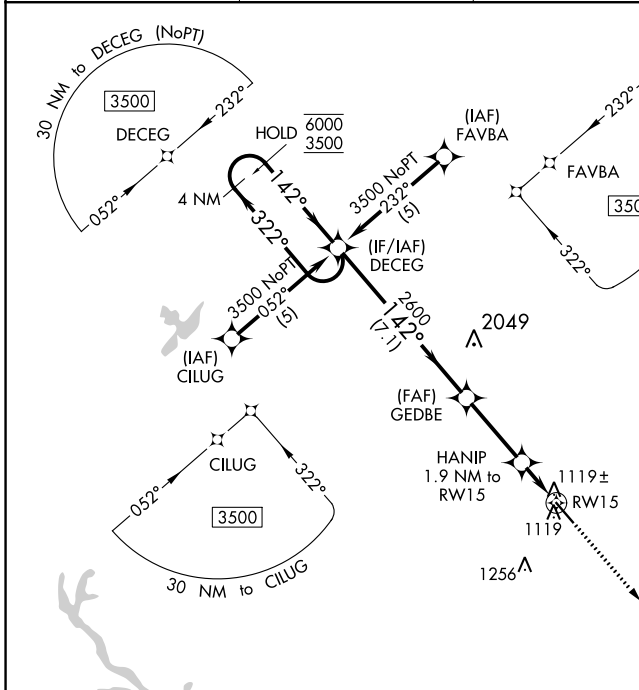
RNP APCH.

▼ Rwy 15 helicopter visibility reduction below 3/4 SM NA. For uncompensated Baro-VNAV systems, LNAV/VNAV NA below -1.6°C or above 47°C.

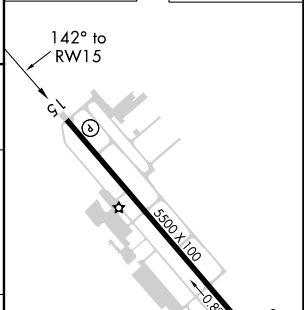
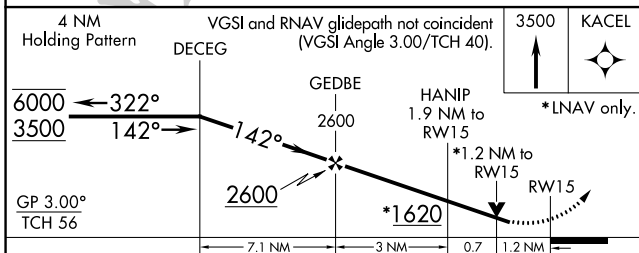
▲

MISSED APPROACH: Climb to 3500 direct KACEL and hold.

AWOS-3PT <b>118.975</b>	ATLANTA APP CON <b>119.8 354.125</b>	GCO <b>121.725</b>	UNICOM <b>122.7 (CTAF) 0</b>
----------------------------	---	-----------------------	---------------------------------



ELEV 970	TDZE 970
----------	----------



CATEGORY	A	B	C	D
LPV DA		1300-1	330 (400-1)	
LNAV/VNAV DA		1389-1½	419 (500-1½)	
LNAV MDA	1380-1	410 (500-1)	1380-1¼	410 (500-1¼)
CIRCLING	1420-1	450 (500-1)	1560-1½ 590 (600-1½)	1560-2 590 (600-2)

HIRL Rwy 15-33 0

SE-4, 31 OCT 2024 to 28 NOV 2024

SE-4, 31 OCT 2024 to 28 NOV 2024