

APP CRS	Rwy Idg	5005
049°	TDZE	146
	Apt Elev	146

RNAV (GPS) RWY 5

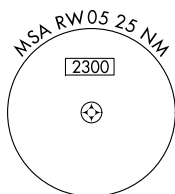
WINTER HAVEN RGNL (GIF')

RNP APCH-GPS.

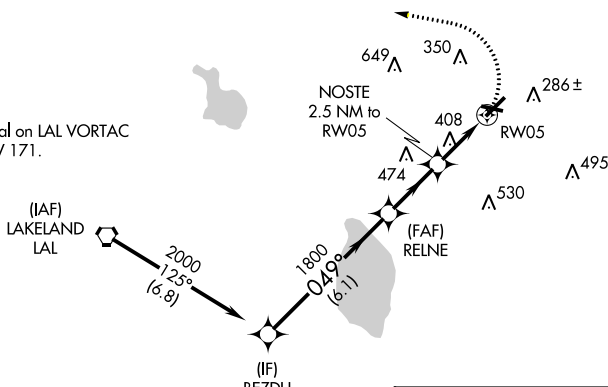
⚠ Rwy 5 helicopter visibility reduction below 1 SM NA. When local altimeter setting not received, use Barlow altimeter setting and increase all MDAs 20 feet and visibility LNAV Cats C and D 1/2 SM. Straight-in Rwy 5 NA at night, Circling Rwy 5, 11, 29 NA at night.

MISSED APPROACH: Climbing left turn to 2000 direct PLUMY and hold.

ASOS 133.675	TAMPA APP CON 120.65 290.3	CLNC DEL (GCO) 121.725	UNICOM 123.05 (CTAF) 0
------------------------	--------------------------------------	----------------------------------	---

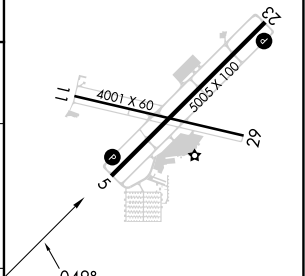
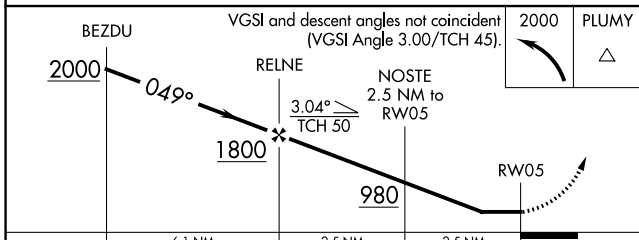


Procedure NA for arrival on LAL VORTAC airway radials 046 CW 171.



⚠ 1549

ELEV 146	TDZE 146
----------	----------



CATEGORY	A	B	C	D
LNAV MDA	660-1	514 (600-1)	660-1 3/8	514 (600-1 3/8)
CIRCLING	720-1	574 (600-1)	820-2 674 (700-2)	960-2 3/4 814 (900-2 3/4)

REIL Rwy 5 and 23
REIL Rwy 11 and 29 **0**
MIRL Rwy 5-23 and 11-29 **0**

SE-3, 31 OCT 2024 to 28 NOV 2024

SE-3, 31 OCT 2024 to 28 NOV 2024