

BATAVIA, OHIO

AL-5955 (FAA)

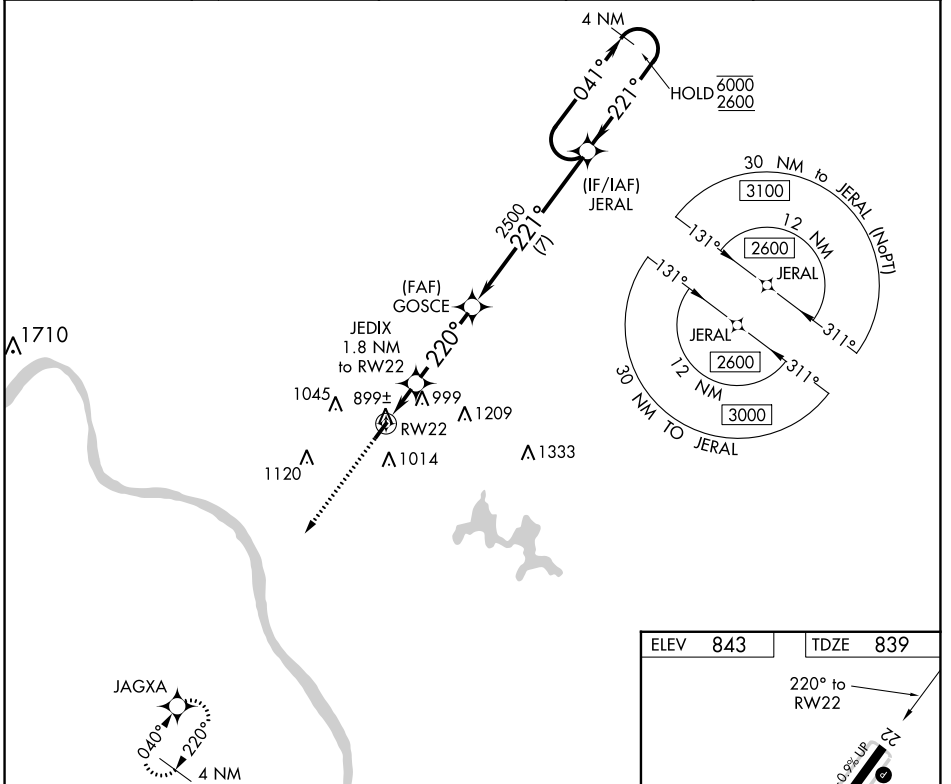
21056

WAAS CH 82227 W22A	APP CRS 220°	Rwy Idg TDZE Apt Elev	3566 839 843
--	------------------------	-----------------------------	---

RNAV (GPS) RWY 22

CLERMONT COUNTY (I69)

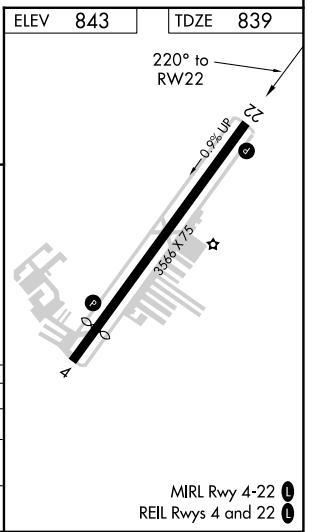
RNP APCH.		MISSED APPROACH: Climb to 2500 direct JAGXA and hold.	
<p>▼ Circling Rwy 4 NA at night. ▲ Rwy 22 helicopter visibility reduction below 1 SM NA.</p>			
AWOS-3 127.275	CINCINNATI APP CON 121.0 254.25	CLNC DEL 124.9	UNICOM 122.975 (CTAF) 1



EC-2, 31 OCT 2024 to 28 NOV 2024

EC-2, 31 OCT 2024 to 28 NOV 2024

2500		JAGXA	Visual Segment- Obstacles.		JERAL	4 NM Holding Pattern	
↑		✧			GOSCE	041° → 6000 ← 221° 2600	
RW22		JEDIX 1.8 NM to RW22					
1420		2500					
← 1.8 →		← 3.4 NM →		← 7 NM →			
CATEGORY	A	B	C	D			
LP MDA	1160-1		321 (400-1)	NA			
LNAV MDA	1240-1	401 (400-1)	1240-1 1/8 401 (400-1 1/8)	NA			
CIRCLING	1320-1 477 (500-1)	1360-1 517 (600-1)	1520-2 677 (700-2)	NA			



BATAVIA, OHIO
Amdt 2 25FEB21

39°05'N-84°13'W

RNAV (GPS) RWY 22

CLERMONT COUNTY (I69)