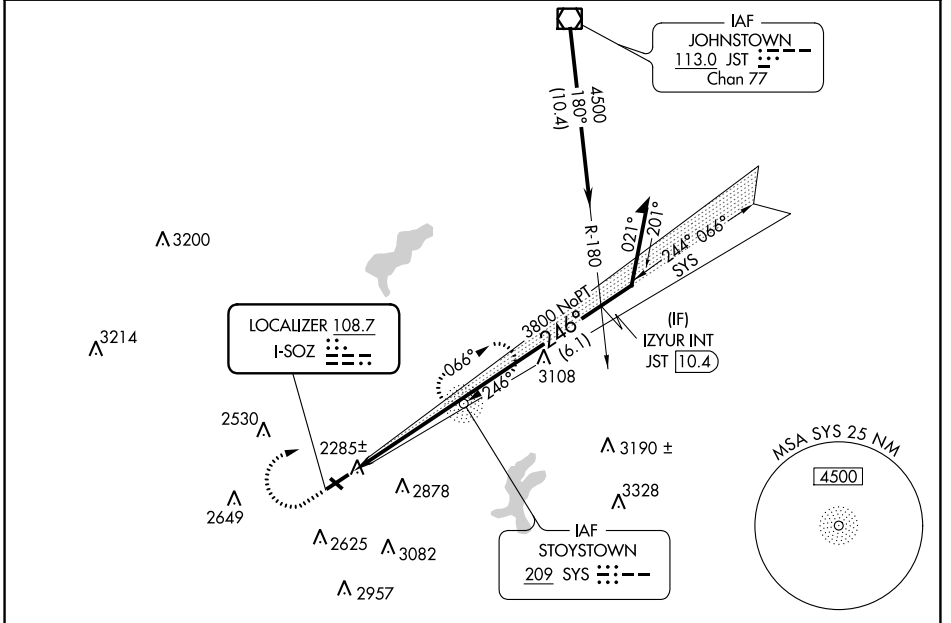


LOC I-SOZ 108.7	APP CRS 246°	Rwy Idg TDZE Apt Elev	5002 2240 2275
---------------------------	------------------------	-----------------------------	---

LOC RWY 25

SOMERSET COUNTY (2G9)

ADF required.		MISSED APPROACH: Climb to 4500 then right turn direct SYS NDB and hold.
<p>▼ Procedure NA at night. Rwy 25 helicopter visibility reduction below 1 SM NA.</p> <p>▲ Circling NA to Rwy 14 and 32.</p>		
AWOS-3P 133.8	JOHNSTOWN APP CON ★ 121.2 299.2	UNICOM 122.8 (CTAF) 0



ELEV 2275	TDZE 2240
-----------	-----------

MIRL Rwy 7-25	REIL Rwys 7 and 25 0
FAF to MAP 4.9 NM	
Knots	60 90 120 150 180
Min:Sec	4:54 3:16 2:27 1:58 1:38

4500	SYS	SYS NDB	Remain within 10 NM	
3800	IZYUR INT JST 10.4	066°	246°	
4500	3.00° TCH 30	6.1 NM	4.9 NM	
CATEGORY	A	B	C	D
S-25	2700-1	460 (500-1)	2700-1 $\frac{3}{8}$ 460 (500-1 $\frac{3}{8}$)	2700-1 $\frac{1}{2}$ 460 (500-1 $\frac{1}{2}$)
CIRCLING	2820-1 545 (600-1)	2920-1 645 (700-1)	3520-3	1245 (1300-3)

NE-4, 31 OCT 2024 to 28 NOV 2024

NE-4, 31 OCT 2024 to 28 NOV 2024