

WAAS CH <b>50232</b> <b>W13A</b>	APP CRS <b>125°</b>	Rwy Idg <b>5152</b> TDZE <b>358</b> Apt Elev <b>358</b>
--	------------------------	---

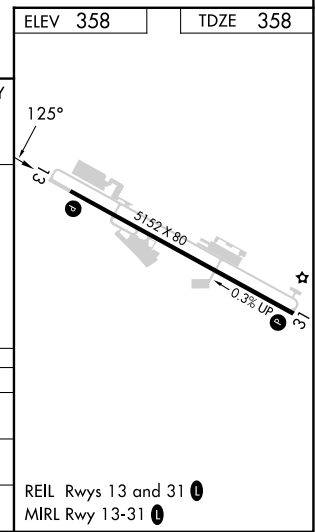
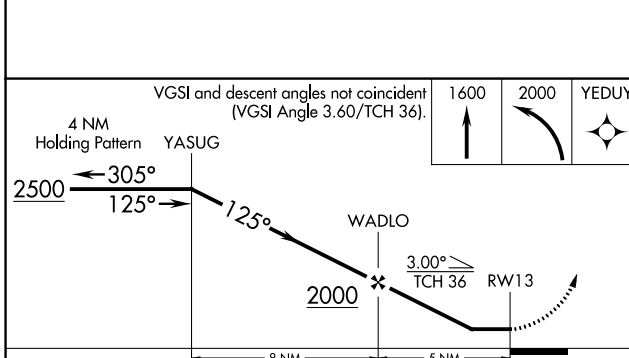
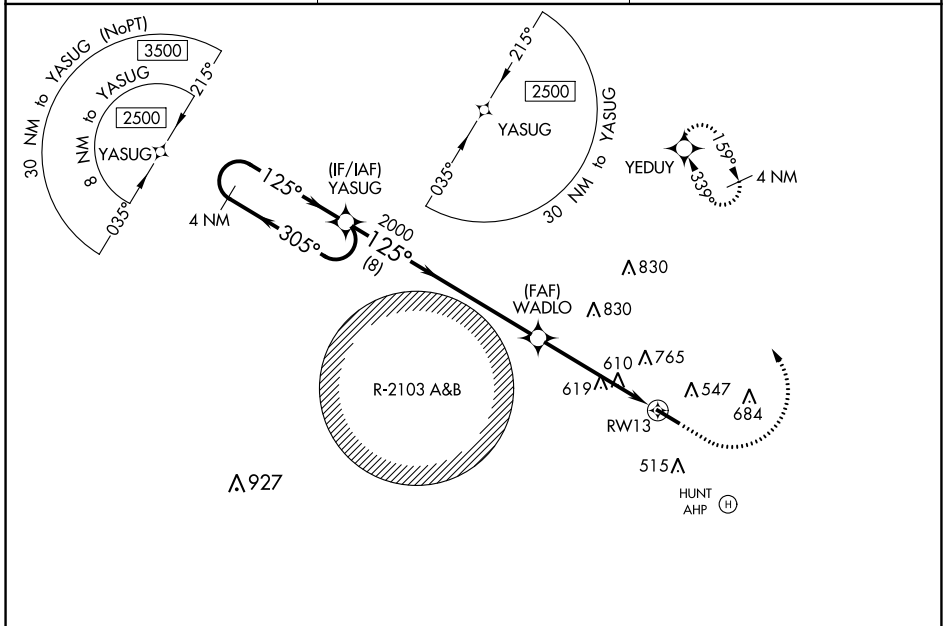
# RNAV (GPS) RWY 13

OZARK/BLACKWELL FLD (71J)

RNP APCH. MISSED APPROACH: Climb to 1600 then climbing left turn to 2000 direct YEDUY and hold.

**NA** Use Dothan altimeter setting; when not received, use Cairns AAF (Fort Novosel) altimeter setting. Procedure NA at night. Rwy 13 helicopter visibility reduction below 1 SM NA.

DHN ASOS <b>135.725</b>	CAIRNS APP CON ★ <b>125.4 327.125</b>	UNICOM <b>122.7 (CTAF)</b>
----------------------------	--	-------------------------------



CATEGORY	A		B		C		D	
	900-1	542 (600-1)	602 (700-1)	742 (800-1¾)	900-1 5/8	542 (600-1 5/8)	960-1 3/4	602 (700-1 3/4)
LP MDA	900-1	542 (600-1)	602 (700-1)	742 (800-1¾)	900-1 5/8	542 (600-1 5/8)	960-1 3/4	602 (700-1 3/4)
LNVA MDA	960-1	602 (700-1)	602 (700-1)	742 (800-1¾)	960-1 3/4	602 (700-1 3/4)	960-1 3/4	602 (700-1 3/4)
CIRCLING	960-1 602 (700-1)	1100-1 3/4 742 (800-1¾)	1100-1 3/4 742 (800-1¾)	1100-2 1/4 742 (800-2 1/4)	NA	NA	NA	NA

SE-4, 31 OCT 2024 to 28 NOV 2024

SE-4, 31 OCT 2024 to 28 NOV 2024

REIL Rws 13 and 31 **0**  
MIRL Rwy 13-31 **0**