

(BLOKR7.BLOKR) 24305

AL-6063 (FAA)

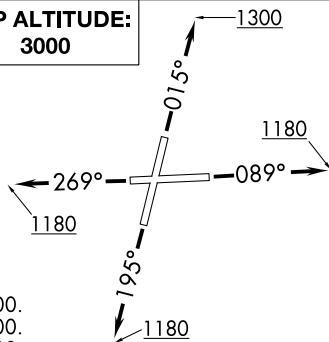
LEWIS UNIVERSITY (L.O.T)
CHICAGO/ROMEOVILLE, ILLINOIS

BLOKR SEVEN DEPARTURE (RNAV)

CHICAGO DEP CON
119.35 354.075
D-ATIS
126.675
GND CON
120.425
LEWIS TOWER ★
134.8 (CTAF)

RNAV 1 - DME/DME/IRU or GPS.
RADAR required. RADAR required for
non-GPS equipped aircraft.

TOP ALTITUDE:
3000

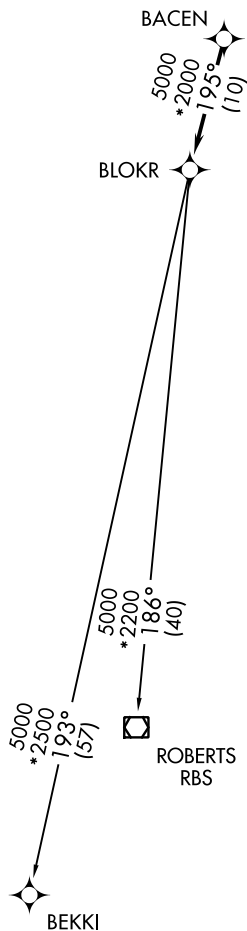
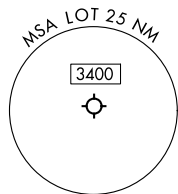


TAKEOFF MINIMUMS:

- Rwy 2: Standard with minimum climb of 420' per NM to 2700.
- Rwy 9: Standard with minimum climb of 310' per NM to 2700.
- Rwy 20: Standard with minimum climb of 370' per NM to 2700.
- Rwy 27: Standard with minimum climb of 340' per NM to 2700.

NOTE: Turbojet departures maintain 250K until advised by ATC.

NOTE: ROBERTS Transition: For aircraft inbound to CMI or STL, or as assigned by ATC.



DEPARTURE ROUTE DESCRIPTION

TAKEOFF RUNWAY 2: Climb on heading 015° to 1300, then as assigned by ATC, for vectors to BACEN, thence. . . .

TAKEOFF RUNWAY 9: Climb on heading 089° to 1180, then as assigned by ATC, for vectors to BACEN, thence. . . .

TAKEOFF RUNWAY 20: Climb on heading 195° to 1180, then as assigned by ATC, for vectors to BACEN, thence. . . .

TAKEOFF RUNWAY 27: Climb on heading 269° to 1180, then as assigned by ATC, for vectors to BACEN, thence. . . .

. . . .on track 195° to BLOKR, then on (transition). Maintain 3000. Expect filed altitude 10 minutes after departure.

BEKKI TRANSITION (BLOKR7.BEKKI):
ROBERTS TRANSITION (BLOKR7.RBS):

NOTE: Chart not to scale.

EC-3, 31 OCT 2024 to 28 NOV 2024

EC-3, 31 OCT 2024 to 28 NOV 2024

BLOKR SEVEN DEPARTURE (RNAV)
(BLOKR7.BLOKR) 31OCT24

CHICAGO/ROMEOVILLE, ILLINOIS
LEWIS UNIVERSITY (L.O.T)