

(ELANR7.ELANR) 24305

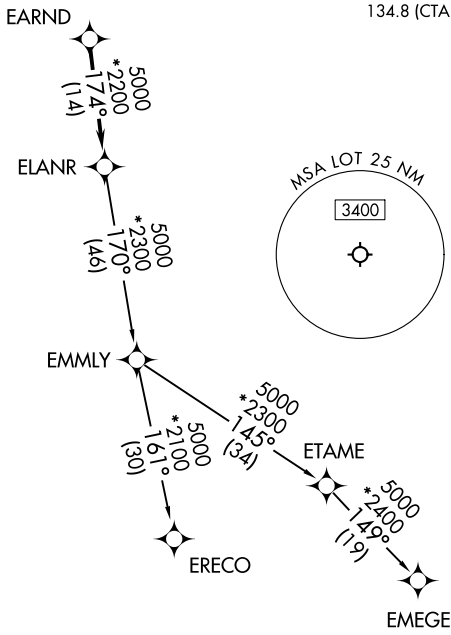
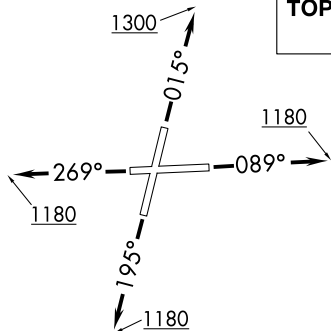
AL-6063 (FAA)

LEWIS UNIVERSITY (LOT)
CHICAGO/ROMEOVILLE, ILLINOIS

ELANR SEVEN DEPARTURE (RNAV)

**TOP ALTITUDE:
3000**

CHICAGO DEP CON
119.35 354.075
D-ATIS
126.675
GND CON
120.425
LEWIS TOWER *
134.8 (CTAF)



TAKEOFF MINIMUMS:

Rwys 9, 20, 27: Standard.
Rwy 2: Standard with minimum
climb of 420' per NM to 1200.

NOTE: Turbojet departures maintain
250K until advised by ATC.
NOTE: EMMLY Transition: For aircraft
inbound to Indianapolis Terminal
Area, or as assigned by ATC.

RNAV 1 - DME/DME/IRU or GPS.
RADAR required.
RADAR required for non-GPS equipped aircraft.

NOTE: Chart not to scale.

DEPARTURE ROUTE DESCRIPTION

TAKEOFF RUNWAY 2: Climb on heading 015° to 1300, then as assigned by ATC, for vectors to EARND, thence. . . .
TAKEOFF RUNWAY 9: Climb on heading 089° to 1180, then as assigned by ATC, for vectors to EARND, thence. . . .
TAKEOFF RUNWAY 20: Climb on heading 195° to 1180, then as assigned by ATC, for vectors to EARND, thence. . . .
TAKEOFF RUNWAY 27: Climb on heading 269° to 1180, then as assigned by ATC, for vectors to EARND, thence. . . .

. . . . on track 174° to ELANR, then on (transition), maintain 3000.
Expect filed altitude 10 minutes after departure.

EMEGE TRANSITION (ELANR7.EMEGE):
EMMLY TRANSITION (ELANR7.EMMLY):
ERECO TRANSITION (ELANR7.ERECO):

ELANR SEVEN DEPARTURE (RNAV)
(ELANR7.ELANR) 31OCT24

CHICAGO/ROMEOVILLE, ILLINOIS
LEWIS UNIVERSITY (LOT)

EC-3, 31 OCT 2024 to 28 NOV 2024

EC-3, 31 OCT 2024 to 28 NOV 2024