

(ILEXY4.ILEXY) 23166

ILEXY FOUR DEPARTURE (RNAV) AL-6111 (FAA)

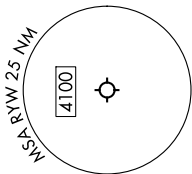
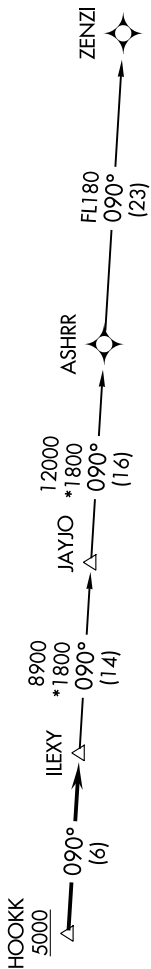
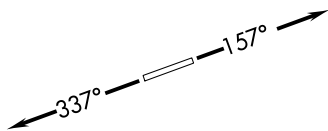
LAGO VISTA TX/RUSTY ALLEN (RYW)
LAGO VISTA, TEXAS

SC-3, 31 OCT 2024 to 28 NOV 2024

AWOS-3PT
119.375
UNICOM (CTAF)
122.725
AUSTIN DEP CON
119.0 370.85

**TOP ALTITUDE:
ASSIGNED BY ATC**

RNAV 1 - DME/DME/IRU or GPS.
RADAR required.



TAKEOFF MINIMUMS:
Rwys 15, 33: Standard.

NOTE: Houston terminal area arrivals expect routing from ILEXY.
NOTE: JAYJO transition to join V306 only.
NOTE: Aircraft not destined the Houston terminal area or joining V306 must file the ZENZI transition.

NOTE: Chart not to scale.

DEPARTURE ROUTE DESCRIPTION

TAKEOFF RUNWAY 15: Climb on heading 157° or as assigned by ATC for vectors to cross HOOKK at or above 5000, thence. . . .
TAKEOFF RUNWAY 33: Climb on heading 337° or as assigned by ATC for vectors to cross HOOKK at or above 5000, thence. . . .
 . . . on track 090° to ILEXY, then on transition. Maintain altitude assigned by ATC. Expect filed altitude 10 minutes after departure.

JAYJO TRANSITION (ILEXY4.JAYJO)
 ZENZI TRANSITION (ILEXY4.ZENZI)

SC-3, 31 OCT 2024 to 28 NOV 2024

ILEXY FOUR DEPARTURE (RNAV) (ILEXY4.ILEXY) 15JUN23

LAGO VISTA, TEXAS
LAGO VISTA TX/RUSTY ALLEN (RYW)