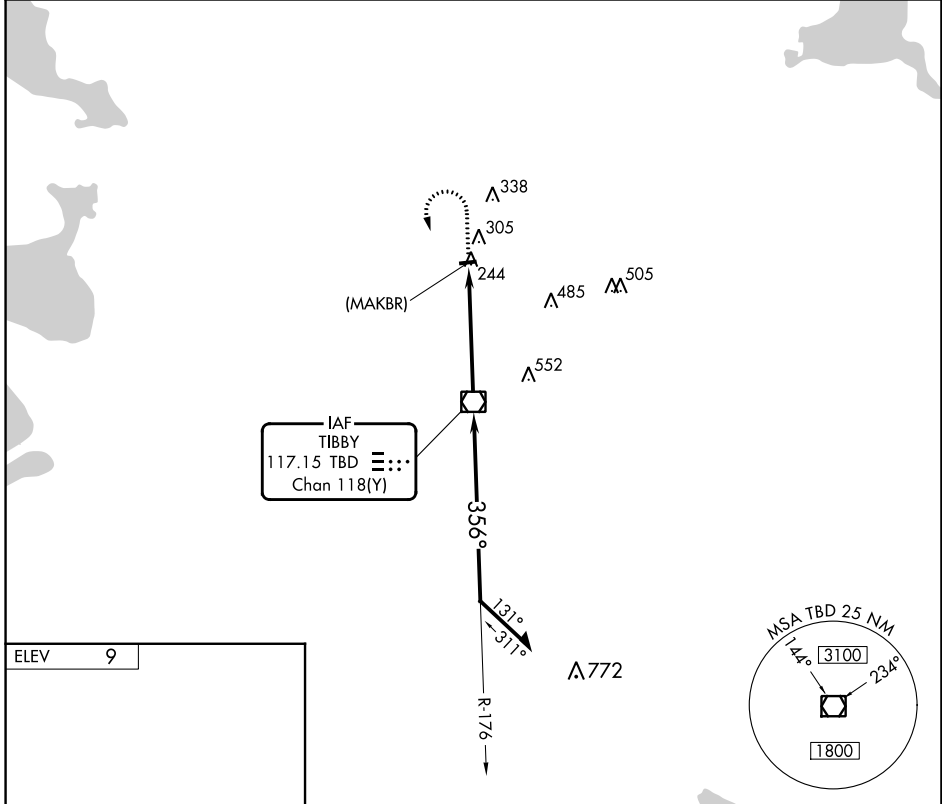


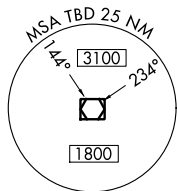
VOR/DME TBD 117.15 Chan 118(Y)	APP CRS 356°	Rwy Idg TDZE Apt Elev	N/A N/A 9
--	------------------------	-----------------------------	--------------------------------------

VOR or GPS-A
THIBODAUX MUNI (L83)

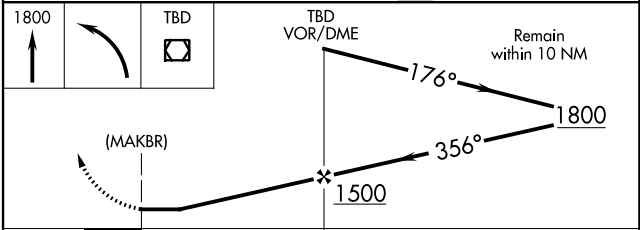
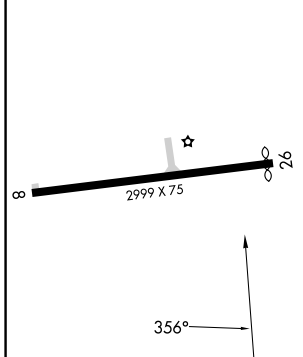
<p>▽ Obtain local altimeter on CTAF; if not received, use Louis Armstrong New Orleans Intl altimeter setting.</p> <p>△NA</p>	<p>MISSED APPROACH: Climb to 1800 then left turn direct TBD VOR/DME.</p>
<p>NEW ORLEANS APP CON 118.9 256.9</p>	<p>UNICOM 122.8 (CTAF) 0</p>



IAF
TIBBY
117.15 TBD **≡:::**
Chan 118(Y)



ELEV **9**



MIRL Rwy 8-26 **0**
REIL Rwys 8 and 26 **0**

FAF to MAP 5 NM

Knots	60	90	120	150	180
Min:Sec	5:00	3:20	2:30	2:00	1:40

CATEGORY	A	B	C	D
CIRCLING	660-1	651 (700-1)	NA	
LOUIS ARMSTRONG NEW ORLEANS INTL ALTIMETER SETTING MINIMUMS				
CIRCLING	760-1	760-1½	NA	
	751 (800-1)	751 (800-1½)		

SC-4, 31 OCT 2024 to 28 NOV 2024

SC-4, 31 OCT 2024 to 28 NOV 2024