

WAAS CH <b>53500</b> <b>W11A</b>	APP CRS <b>110°</b>	Rwy Idg <b>5480</b> TDZE <b>145</b> Apt Elev <b>145</b>
--	------------------------	---

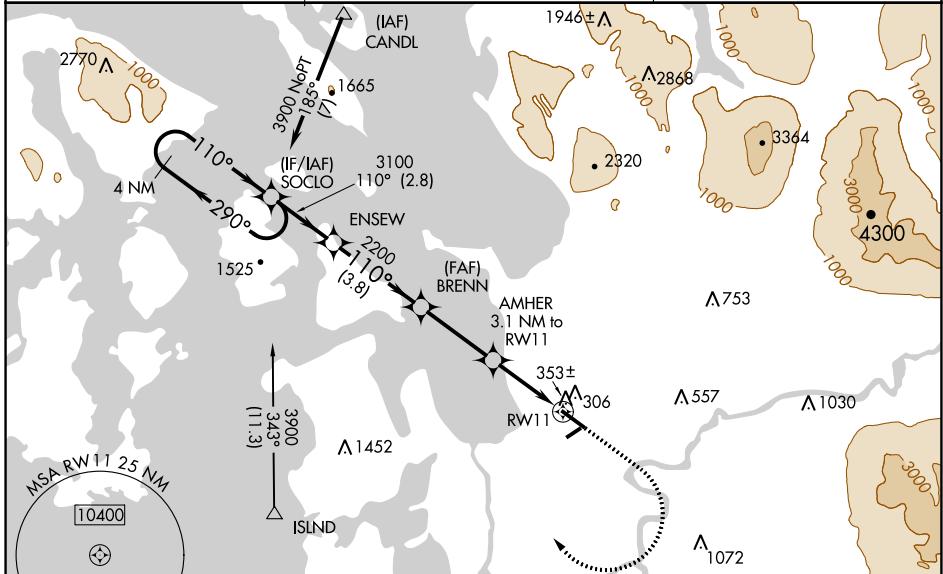
# RNAV (GPS) RWY 11

SKAGIT RGNL (BVS)

**⚠** Circling to Rwy 04 NA at night. For uncompensated Baro-VNAV systems, LNAV/VNAV NA below -15°C (5°F) or above 54°C (130°F). Baro-VNAV and VDP NA when using Friday Harbor altimeter setting. DME/DME RNP-0.3 NA. When local altimeter setting not received use Friday Harbor altimeter setting: increase LPV DA to 561 feet, LNAV/VNAV DA to 710 feet and all Cats visibilities ¼ SM; increase all MDA 60 feet and Cats C and D visibility ¼ SM. Helicopter visibility reduction below ¾ SM NA.

**MISSED APPROACH:** Climb to 1000 then climbing right turn to 3900 direct SOCLO and hold, continue climb-in-hold to 3900.

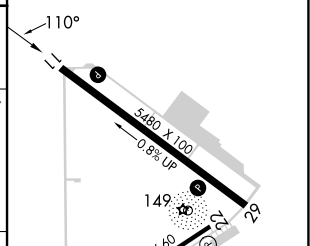
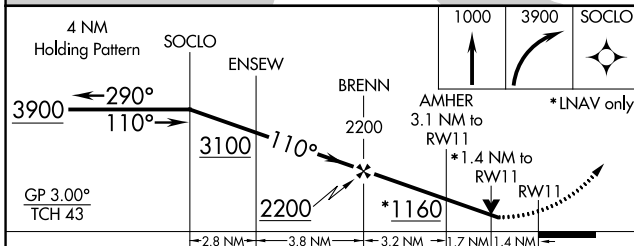
AWOS-3 <b>121.125</b>	WHIDBEY APP CON <b>120.7 270.8</b>	UNICOM <b>123.075 (CTAF)</b>
--------------------------	---------------------------------------	---------------------------------



NW-1, 31 OCT 2024 to 28 NOV 2024

NW-1, 31 OCT 2024 to 28 NOV 2024

ELEV 145	TDZE 145
----------	----------



CATEGORY	A	B	C	D
LPV DA		500-1¼	355 (400-1¼)	
LNAV/VNAV DA		649-1¾	504 (600-1¾)	
LNAV MDA	620-1	475 (500-1)	620-1¾ 475 (500-1¾)	700-1⅝ 555 (600-1⅝)
CIRCLING	680-1 535 (600-1)	700-1 555 (600-1)	700-1½ 555 (600-1½)	1000-2¾ 855 (900-2¾)

LURL Rwy 4-22  
 REIL Rws 11 and 29  
 MRL Rwy 11-29