

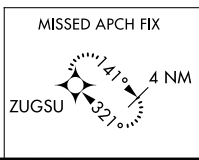
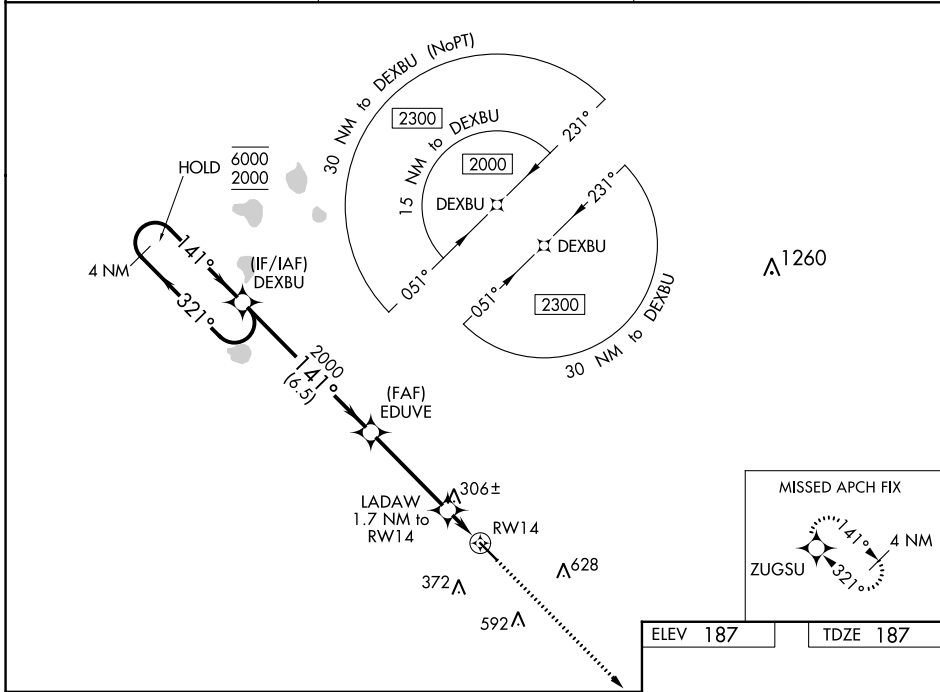
WAAS CH <b>69518</b> <b>W14A</b>	APP CRS <b>141°</b>	Rwy Idg TDZE <b>187</b> Apt Elev <b>187</b>	<b>4999</b>
--	------------------------	---	-------------

# RNAV (GPS) RWY 14

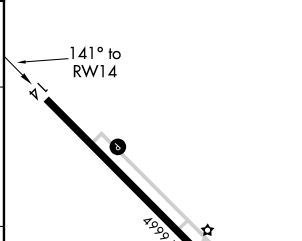
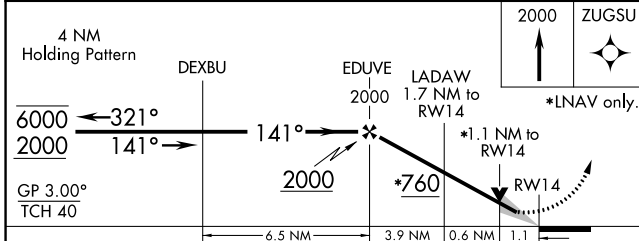
HOMERVILLE (HOE)

RNP APCH.	MISSED APPROACH: Climb to 2000 direct ZUGSU and hold.
<p>For uncompensated Baro-VNAV systems, LNAV/VNAV NA below -15°C or above 54°C.</p>	

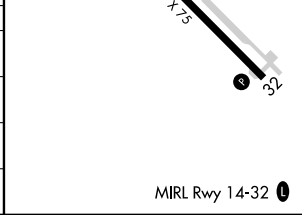
AWOS-3 <b>118.725</b>	VALDOSTA APP CON★ <b>126.6 285.6</b>	CTAF <b>122.9 0</b>
--------------------------	---	------------------------



ELEV 187	TDZE 187
----------	----------



CATEGORY	A	B	C	D
LPV DA		437-1	250 (300-1)	
LNAV/VNAV DA		461-1	274 (300-1)	
LNAV MDA		560-1	373 (400-1)	
CIRCLING	680-1	740-1	940-2¼	940-2½
	493 (500-1)	553 (600-1)	753 (800-2¼)	753 (800-2½)



SE-4, 31 OCT 2024 to 28 NOV 2024

SE-4, 31 OCT 2024 to 28 NOV 2024