

APP CRS	Rwy Idg	6600
083°	TDZE	9
	Apt Elev	9

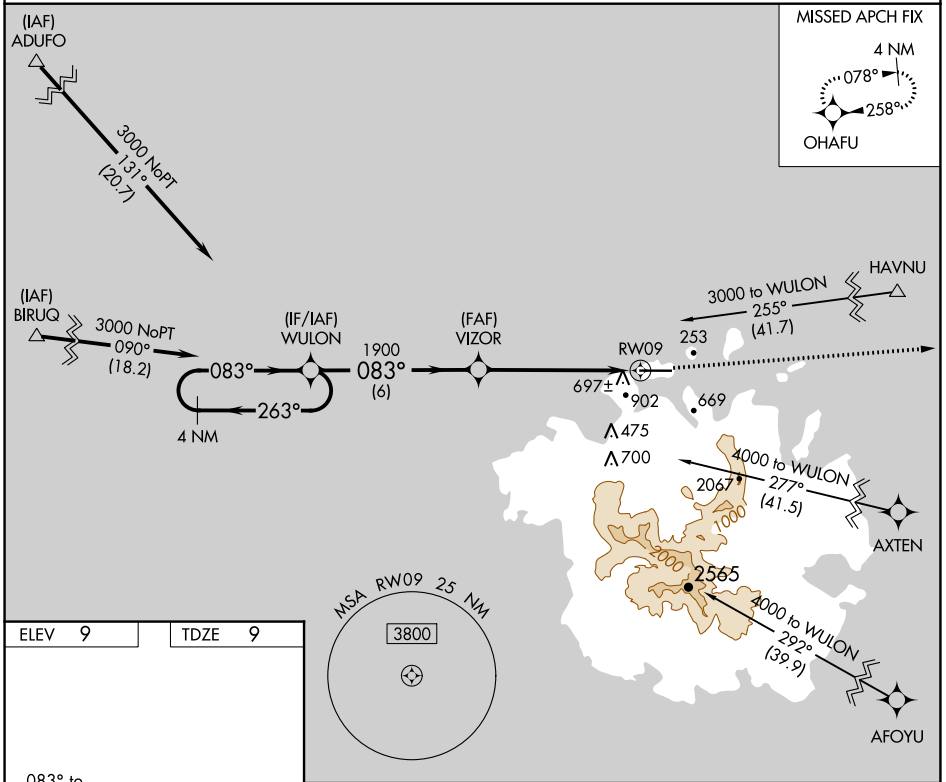
RNAV (GPS) X RWY 9

POHNPEI INTL (PNI)(PTPN)

⚠ Obtain local altimeter setting on CTAF; when not received, procedure NA. Circling NA south of Rwy 9-27. Procedure NA at night except by prior arrangement for runway lights.
⚠ DME/DME RNP-0.3 NA. No controlled airspace below 5500. Ships with maximum height of 150 feet MSL may traverse Pohnpei Channel 400 feet off approach end of runway, closing airport at times.

MISSED APPROACH:
 Climb to 3000 direct OHAFU and hold.

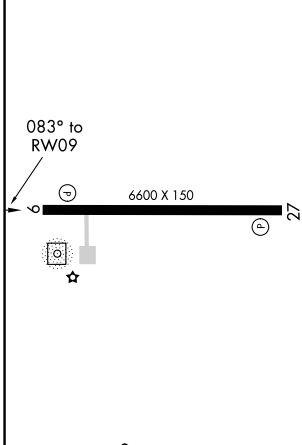
POHNPEI RADIO
123.6 (CTAF)



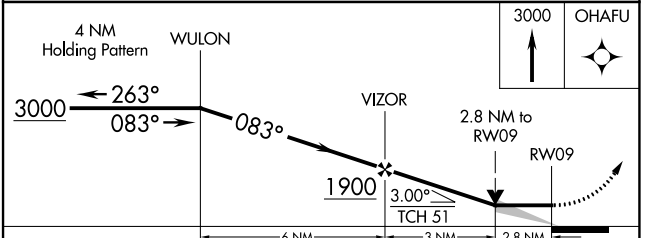
PAC, 31 OCT 2024 to 26 DEC 2024

PAC, 31 OCT 2024 to 26 DEC 2024

ELEV 9	TDZE 9
--------	--------



MIRL Rwy 9-27
 REIL Rwy 9 and 27



CATEGORY	A	B	C	D
LNAV MDA	960-1¼ 951 (1000-1¼)	960-1½ 951 (1000-1½)	960-3	951 (1000-3)
CIRCLING	960-1¼ 951 (1000-1¼)	960-1½ 951 (1000-1½)	960-3	951 (1000-3)