

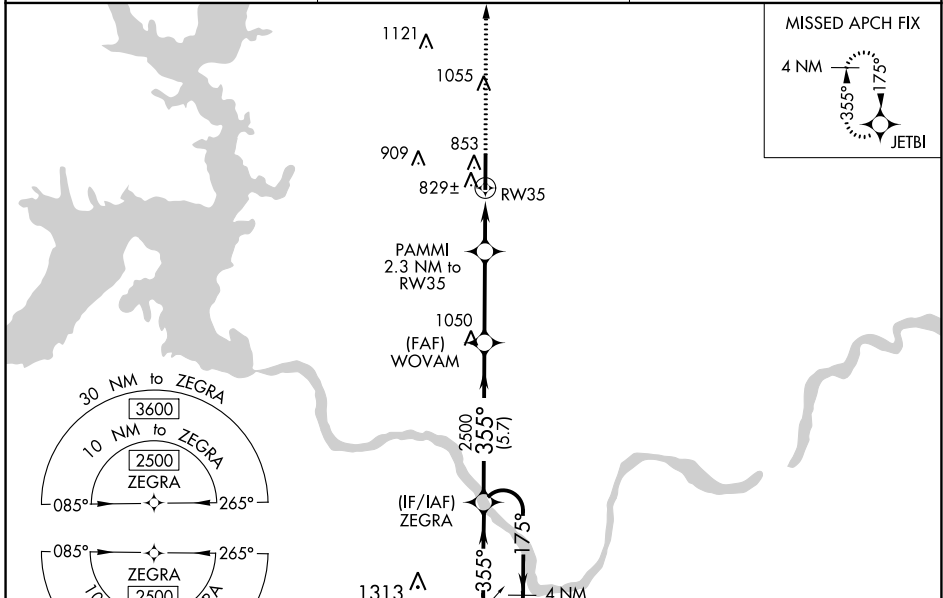
WAAS CH 48918 W35A	APP CRS 355°	Rwy Idg TDZE Apt Elev	6800 694 699
--	------------------------	-----------------------------	---

RNAV (GPS) RWY 35

DURANT RGNL/EAKER FLD (DUA)

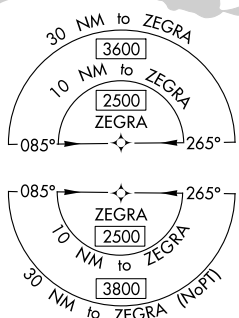
RNP APCH.	MISSED APPROACH: Climb to 2500 direct JETBI and hold.
<p>▼</p> <p>▲ For uncompensated Baro-VNAV systems, LNAV/VNAV NA below -16°C or above 54°C.</p>	

AWOS-3 124.175	FORT WORTH CENTER 124.75 323.0	UNICOM 123.05 (CTAF) 0
--------------------------	--	----------------------------------

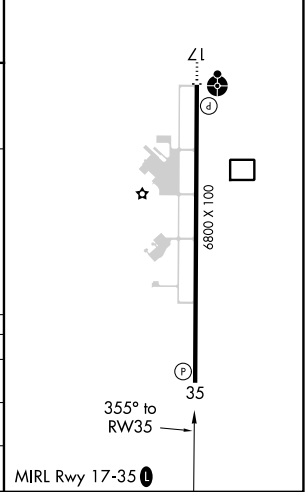
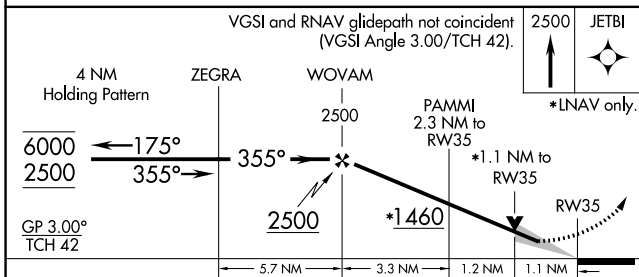


SC-1, 31 OCT 2024 to 28 NOV 2024

SC-1, 31 OCT 2024 to 28 NOV 2024



ELEV 699	TDZE 694
----------	----------



CATEGORY	A	B	C	D
LPV DA	894-3/4	200 (200-3/4)		NA
LNAV/VNAV DA	1086-1 1/8	392 (400-1 1/8)		NA
LNAV MDA	1080-1	386 (400-1)	1080-1 1/8 386 (400-1 1/8)	NA