

WAAS Ch <b>42817</b> <b>W23A</b>	APP CRS <b>228°</b>	Rwy Idg <b>5002</b> TDZE <b>1013</b> Apt Elev <b>1013</b>
--	------------------------	---

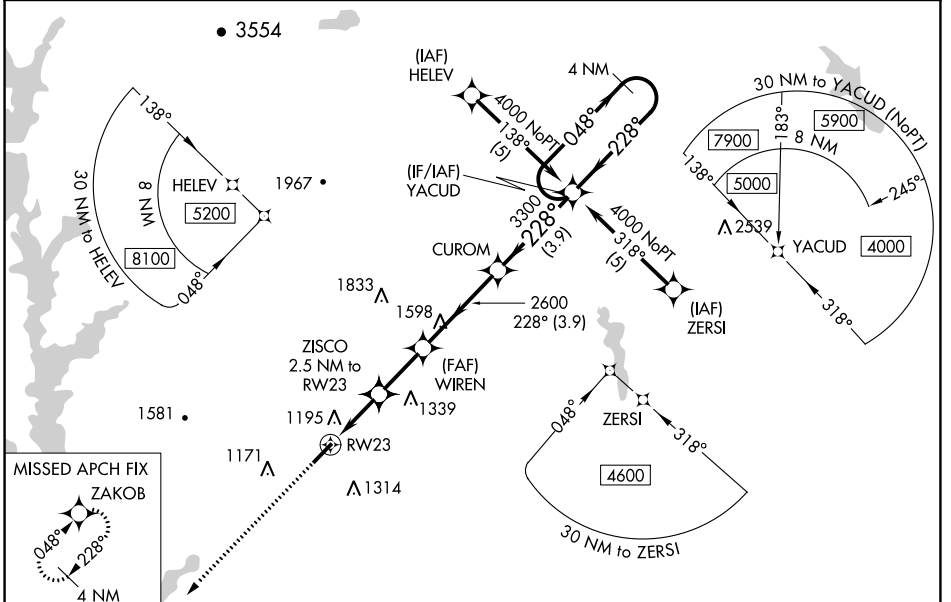
# RNAV (GPS) RWY 23

PICKENS COUNTY (L,Q,K)

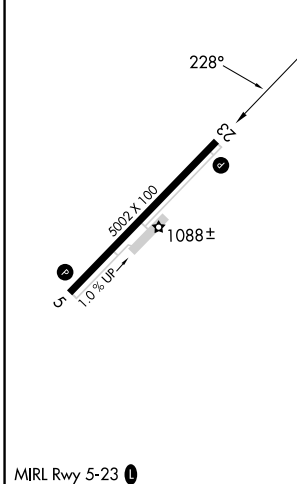
For uncompensated Baro-VNAV systems, LNAV/VNAV NA below -17°C (2°F) or above 46°C (114°F). DME/DME RNP-0.3 NA. When local altimeter setting not received, use Clemson altimeter setting and increase LPV DA to 1356 feet and visibility all Cats ¼ SM; increase LNAV/VNAV DA to 1594 feet; increase all MDAs 60 feet and LNAV Cat C and Circling Cat D visibility ½ SM, increase LNAV Cat D visibility ½ SM. Baro-VNAV NA when using Clemson altimeter setting. VDP NA with Clemson altimeter setting.

**MISSED APPROACH:** Climb to 3000 direct ZAKOB and hold.

AWOS-3 <b>120.0</b>	GREER APP CON * <b>118.8 270.275</b>	UNICOM <b>122.8 (CTAF) 0</b>
------------------------	---	---------------------------------



ELEV 1013	TDZE 1013
-----------	-----------



3000	ZAKOB	VGSIs and RNAV glidepath not coincident (VGSi Angle 3.00/TCH 26).		4 NM Holding Pattern
<p>*LNAV only.</p> <p>RW23 → 1.5 NM → ZISCO (2.5 NM to RW23) → 1 NM → WIREN (2600) → 2.3 NM → CUROM → 3.9 NM → YACUD (3300) → 3.9 NM → 4000</p> <p>Altitudes: 1860* (at WIREN), 2600 (at CUROM), 3300 (at YACUD), 4000 (at final approach).</p> <p>GP 3.00° TCH 45</p>				
CATEGORY	A	B	C	D
LPV DA	1310-1		297 (300-1)	
LNAV/VNAV DA	1548-2		535 (600-2)	
LNAV MDA	1500-1	487 (500-1)	1500-1½ 487 (500-1½)	1500-1½ 487 (500-1½)
CIRCLING	1560-1 547 (600-1)	1620-1 607 (700-1)	1620-1¾ 607 (700-1¾)	1780-2½ 767 (800-2½)

SE-2, 31 OCT 2024 to 28 NOV 2024

SE-2, 31 OCT 2024 to 28 NOV 2024