

| | | |
|-------------|----------|-------------|
| APP CRS | Rwy Idg | 4429 |
| 234° | TDZE | 823 |
| | Apt Elev | 833 |

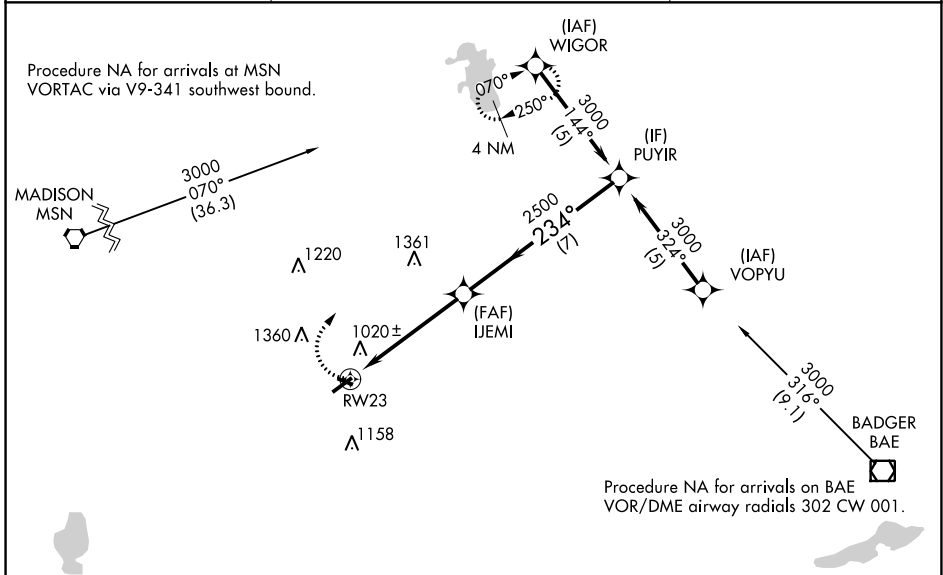
RNAV (GPS) RWY 23

WATERTOWN MUNI (RYV)

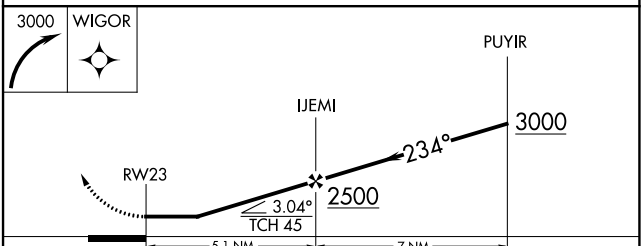
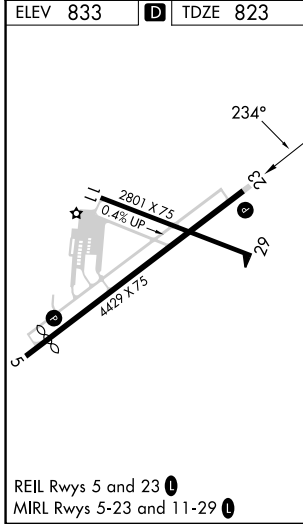
⚠ Rwy 23 helicopter visibility reduction below 1 SM NA. DME/DME RNP-0.3 NA. When local altimeter setting not received, use Dodge County altimeter setting and increase all MDAs 60 feet, increase LNAV Cat C and D visibility 1/8 SM. Straight-in Rwy 23 NA at night, Circling Rwy 23 NA at night.

⚠ MISSED APPROACH: Climbing right turn to 3000 direct WIGOR and hold.

| | | |
|--------------------------|--|-------------------------------|
| AWOS-3 119.975 | MADISON APP CON * 119.15 343.7 | UNICOM 122.8 (CTAF) |
|--------------------------|--|-------------------------------|



| | | |
|----------|----------|----------|
| ELEV 833 | D | TDZE 823 |
|----------|----------|----------|



| CATEGORY | A | B | C | D |
|----------|-----------------------|-----------------------|-------------------------|-------------------------|
| LNAV MDA | 1420-1 | 597 (600-1) | 1420-1¾ 597 (600-1¾) | 1420-1¾ 597 (600-1¾) |
| CIRCLING | 1420-1 587 (600-1) | 1440-1 607 (700-1) | 1720-2¾ 887 (900-2¾) | 1720-3 887 (900-3) |

EC-3, 31 OCT 2024 to 28 NOV 2024

EC-3, 31 OCT 2024 to 28 NOV 2024