

GARLAND FIVE DEPARTURE
(GARLS.TT) 25JAN24

DECATUR, TEXAS
DECATUR MUNI (LUD)

LONE STAR DEP CON
118.1 306.95
CTAF
122.8

**TOP ALTITUDE:
ASSIGNED BY ATC**

RADAR and DME required.

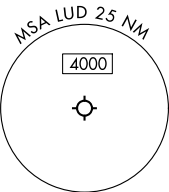
(GARLS.TT) 24305
GARLAND FIVE DEPARTURE

AL-6190 (FAA)

DECATUR MUNI (LUD)
DECATUR, TEXAS

TAKEOFF MINIMUMS

Rwy 17: Standard.
Rwy 35: Standard with minimum climb of 320'/NM to 3500.



NOTE: Chart not to scale.

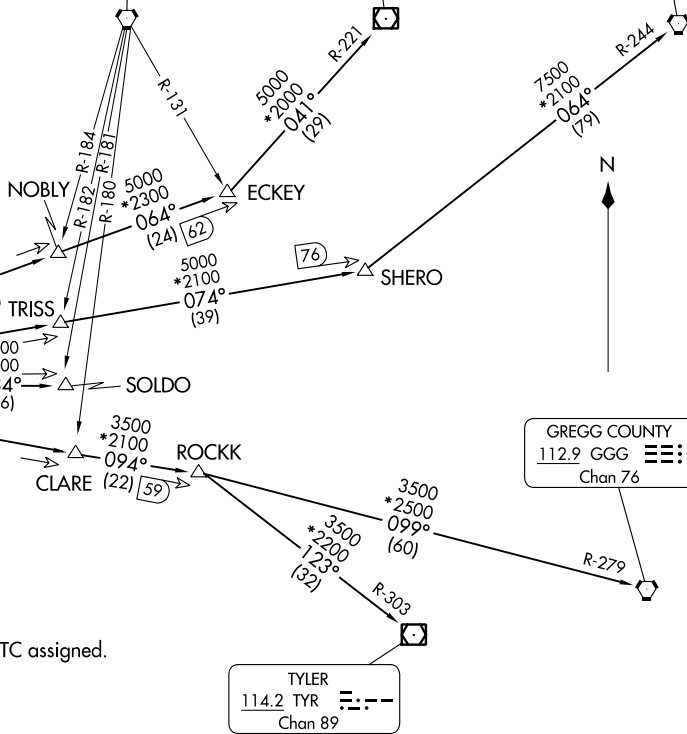
NOTE: SOLDO Transition: ATC assigned.

(CONTINUED ON FOLLOWING PAGE)

BONHAM
114.6 BYP
Chan 93

PARIS
113.6 PRX
Chan 83

TEXARKANA
116.3 TXK
Chan 110



MAVERICK
113.1 TTT
Chan 78

NOBLY

ECKEY

SHERO

TRISS

SOLDO

CLARE

ROCKK

GREGG COUNTY
112.9 GGG
Chan 76

TYLER
114.2 TYR
Chan 89

GARLAND FIVE DEPARTURE



DEPARTURE ROUTE DESCRIPTION

TAKEOFF RUNWAY 17: Climb on heading 163° to 1700 before proceeding north.

When entering controlled airspace, fly assigned heading for RADAR vectors to appropriate route. Maintain ATC assigned altitude.

GREGG COUNTY TRANSITION (GARL5.GGG): From over TTT VOR/DME on TTT R-094 to ROCKK, then on GGG R-279 to GGG VORTAC.

PARIS TRANSITION (GARL5.PRX): From over TTT VOR/DME on TTT R-064 to ECKEY, then on PRX R-221 to PRX VOR/DME.

SOLDO TRANSITION (GARL5.SOLDO): From over TTT VOR/DME on TTT R-084 to SOLDO.

TEXARKANA TRANSITION (GARL5.TXK): From over TTT VOR/DME on TTT R-074 to SHERO, then on TXK R-244 to TXK VORTAC.

TYLER TRANSITION (GARL5.TYR): From over TTT VOR/DME on TTT R-094 to ROCKK, then on TYR R-303 to TYR VOR/DME.

SC-2, 31 OCT 2024 to 28 NOV 2024

SC-2, 31 OCT 2024 to 28 NOV 2024