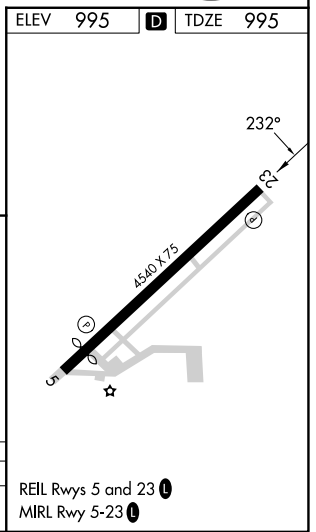
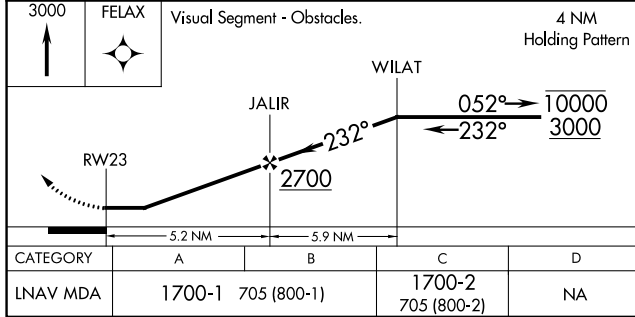
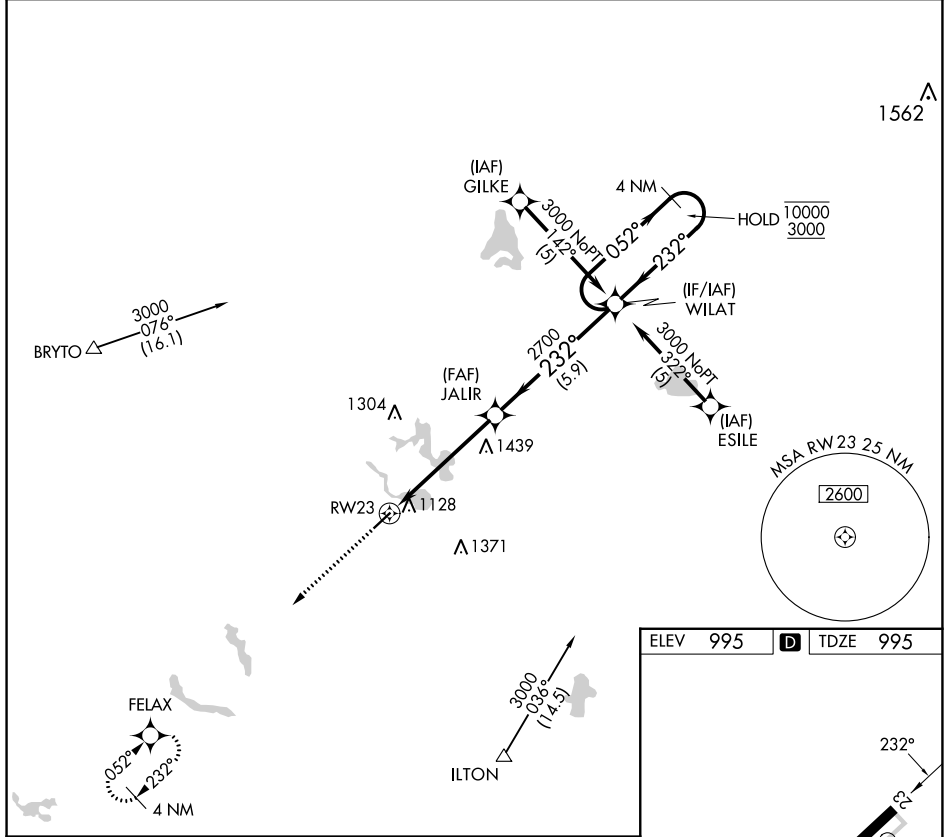


APP CRS	Rwy Idg	4000
232°	TDZE	995
	Apt Elev	995

RNAV (GPS) RWY 23

TRI-STATE STEUBEN COUNTY (A.N.Q)

RNP APCH.		MISSED APPROACH: Climb to 3000 direct FELAX and hold.
<p>▼ Rwy 23 helicopter visibility reduction below 1 SM NA. Procedure NA at night.</p>		
AWOS-3 118.175	FORT WAYNE APP CON 127.2 284.6 (SW/NW) 132.15 284.6 (SE/NE)	UNICOM 123.075 (CTAF) ①



EC-2, 31 OCT 2024 to 28 NOV 2024

EC-2, 31 OCT 2024 to 28 NOV 2024