

APP CRS <b>052°</b>	Rwy Idg <b>4000</b>
	TDZE <b>990</b>
	Apt Elev <b>995</b>

**RNAV (GPS) RWY 5**  
TRI-STATE STEUBEN COUNTY (ANQ)

RNP APCH.

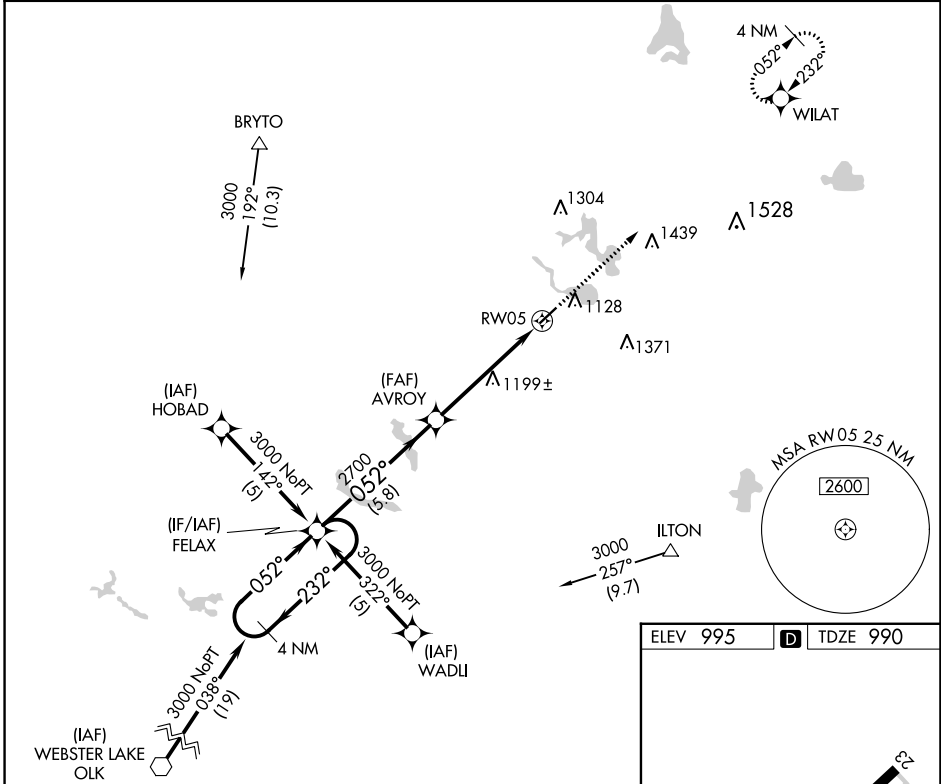
- For uncompensated Baro-VNAV systems, LNAV/VNAV NA below -16°C or above 54°C.
- Rwy 5 helicopter visibility reduction below 3/4 SM NA.

**MISSED APPROACH:**  
Climb to 3000 direct  
WILAT and hold.

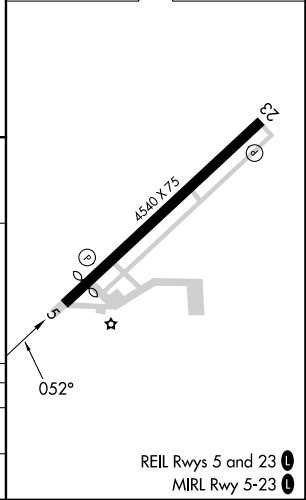
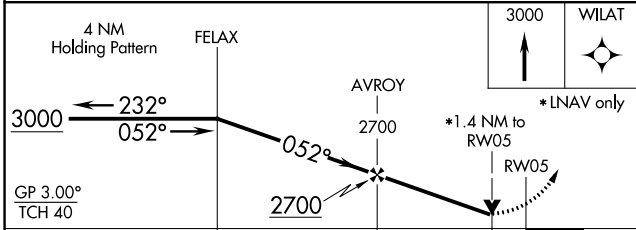
AWOS-3  
**118.175**

FORT WAYNE APP CON  
**127.2 284.6** (SW/NW)  
**132.15 284.6** (SE/NE)

UNICOM  
**123.075** (CTAF)



ELEV 995 TDZE 990



REIL Rws 5 and 23   
MIRL Rwy 5-23

CATEGORY	A	B	C	D
LNAV/VNAV DA	1474-1 3/4		484 (500-1 3/4)	NA
LNAV MDA	1460-1	470 (500-1)	1460-1 1/2 470 (500-1 1/2)	NA

EC-2, 31 OCT 2024 to 28 NOV 2024

EC-2, 31 OCT 2024 to 28 NOV 2024