

WAAS CH 73029 W34A	APP CRS 336°	Rwy Idg TDZE Apt Elev	4435 1459 1478
--	------------------------	-----------------------------	---

RNAV (GPS) RWY 34

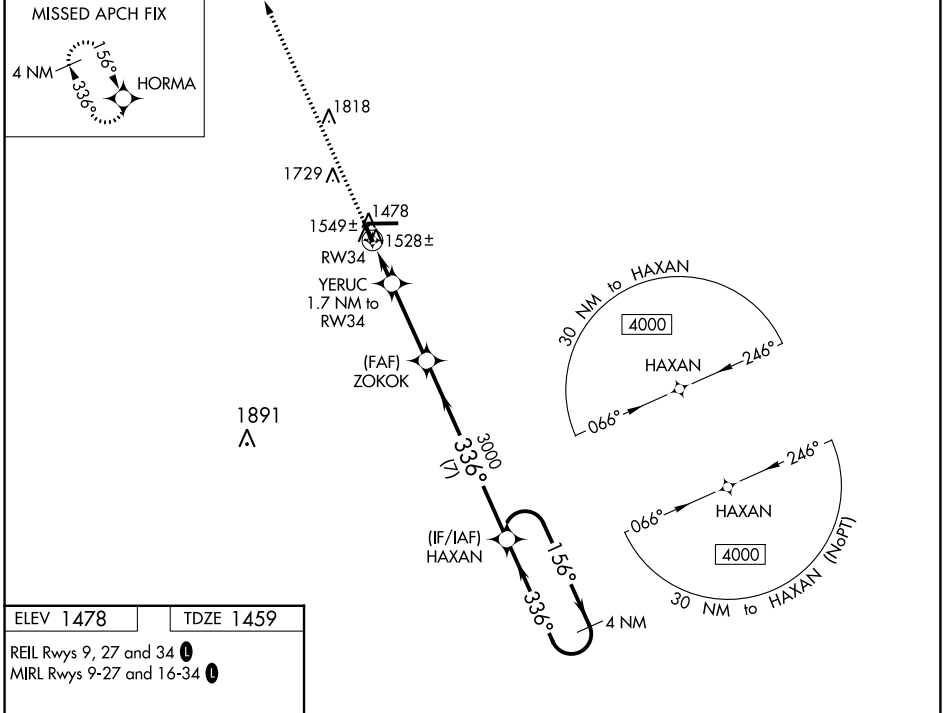
TAYLOR COUNTY (MDZ)

RNP APCH.

⚠ When local altimeter setting not received, use Merrill altimeter setting: increase all MDA 100 feet and all Cat C and D visibilities ¼ SM. VDP NA when using Merrill altimeter setting.

MISSED APPROACH: Climb to 4000 direct HORMA and hold.

AWOS-3 119.025	MINNEAPOLIS CENTER 124.4 317.7	UNICOM 122.8 (CTAF) 0
--------------------------	--	---------------------------------



ELEV 1478 TDZE 1459

REIL Rwy 9, 27 and 34 0
MIRL Rwy 9-27 and 16-34 0

4000	HORMA	VGSI and descent angles not coincident (VGSI Angle 3.00/TCH 27).		4 NM Holding Pattern	
4000	ZOKOK	YERUC 1.7 NM to RW34	HAXAN	4000	
3000	RW34	0.9 NM to RW34	336°	336°	
2020	RW34	0.9 NM to RW34	3000	3000	
CATEGORY		A	B	C	D
LP	MDA	1780-1		321 (400-1)	
LNAV	MDA	1800-1		341 (400-1)	
CIRCLING		1940-1	2040-1	2040-1½	2180-2¼
		462 (500-1)	562 (600-1)	562 (600-1½)	702 (800-2¼)

EC-3, 31 OCT 2024 to 28 NOV 2024

EC-3, 31 OCT 2024 to 28 NOV 2024