

WAAS CH <b>40215</b> W21A	APP CRS <b>205°</b>	Rwy Idg 5190
		TDZE 194
		Apt Elev 198

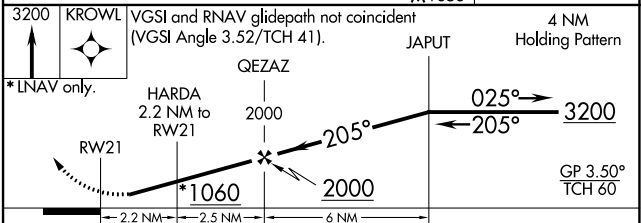
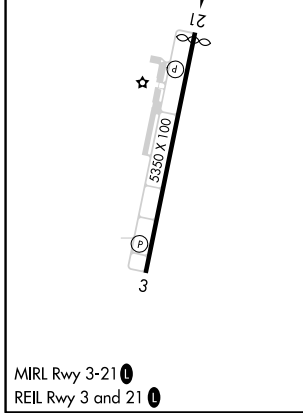
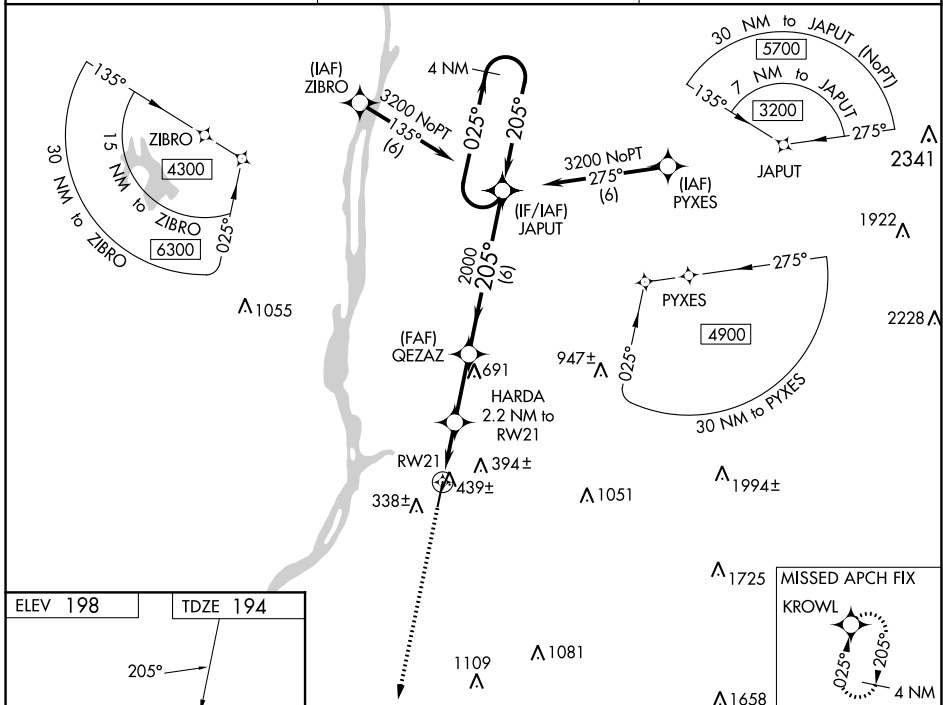
# RNAV (GPS) RWY 21

COLUMBIA COUNTY (1B1)

**NA** Baro-VNAV NA when using Albany altimeter setting. For uncompensated Baro-VNAV systems, LNAV/VNAV NA below -15°C (5°F) or above 14°C (58°F). Rwy 21 helicopter visibility reduction below 1 SM NA. DME/DME RNP -0.3 NA. Straight-In Rwy 21 and Circling Rwy 21 NA at night. When local altimeter setting not received, use Albany altimeter setting and increase LPV DA to 638 feet and visibility to 1 $\frac{3}{8}$  SM all Cats, LNAV/VNAV DA to 709 feet and visibility to 1 $\frac{3}{8}$  SM all Cats; increase all MDA 80 feet, LNAV Cat C/D visibility to 1 $\frac{3}{4}$  SM, Circling Cat C to 2 $\frac{1}{4}$  SM, and Cat D to 3 SM.

**MISSED APPROACH:** Climb to 3200 direct KROWL and hold, continue climb-in-hold to 3200.

AWOS-3 <b>133.525</b>	ALBANY APP CON <b>132.825 307.2</b>	UNICOM <b>123.05 (CTAF)</b> <b>0</b>
--------------------------	--	---



CATEGORY	A	B	C	D
LPV DA		562-1	368 (400-1)	
LNAV/VNAV DA		633-1 $\frac{1}{4}$	439 (500-1 $\frac{1}{4}$ )	
LNAV MDA	700-1	506 (600-1)	700-1 $\frac{3}{8}$	506 (600-1 $\frac{3}{8}$ )
<b>C</b> CIRCLING	740-1 542 (600-1)	860-1 662 (700-1)	860-1 $\frac{3}{4}$ 662 (700-1 $\frac{3}{4}$ )	1020-2 $\frac{3}{4}$ 822 (900-2 $\frac{3}{4}$ )

NE-2, 31 OCT 2024 to 28 NOV 2024

NE-2, 31 OCT 2024 to 28 NOV 2024