

|                         |                        |                             |   |
|-------------------------|------------------------|-----------------------------|---|
| WAAS<br>CH <b>86608</b> | APP CRS<br><b>345°</b> | Rwy Idg<br>TDZE<br>Apt Elev | <b>5002</b><br><b>610</b><br><b>610</b> |
| <b>W35A</b>             |                        |                             |   |

# RNAV (GPS) RWY 35

ROBERT SIBLEY (SZY)

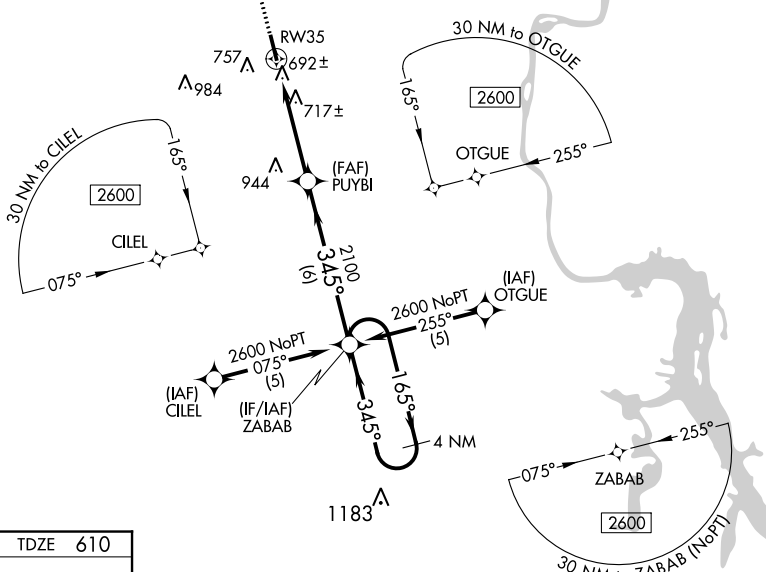
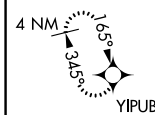
RNP-APCH - GPS.

Baro-VNAV NA when using Mc Kellar-Sipes Rgnl altimeter setting. For uncompensated Baro-VNAV systems, LNAV/VNAV NA below -16°C or above 47°C. Helicopter visibility reduction below 1 SM not authorized. When local altimeter setting not received, use Mc Kellar-Sipes Rgnl altimeter setting: increase LPV DA to 1042 and all visibilities ¼ SM, increase LNAV/VNAV DA to 1084 and all visibilities ½ SM; increase all MDAs 100 feet and LNAV visibility Cat C and D and Circling visibility Cat D ¼ SM. Straight-in Rwy 35 NA at night, Circling Rwy 17, 35 NA at night.

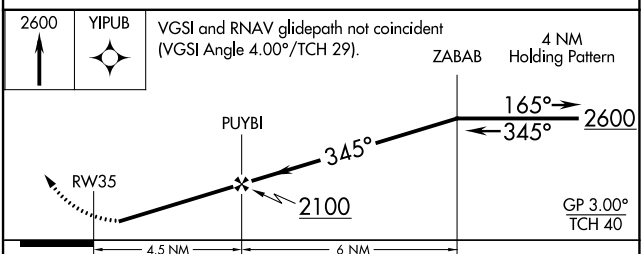
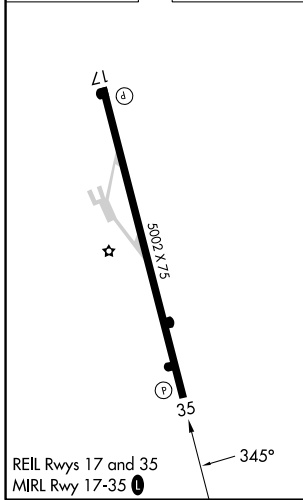
MISSED APPROACH:  
Climb to 2600 direct YIPUB and hold.

|                          |                                       |                                 |
|--------------------------|---------------------------------------|---------------------------------|
| AWOS-3<br><b>118.425</b> | MEMPHIS CENTER<br><b>124.35 318.1</b> | UNICOM<br><b>122.7 (CTAF) 0</b> |
|--------------------------|---------------------------------------|---------------------------------|

MISSED APCH FIX



|          |          |
|----------|----------|
| ELEV 610 | TDZE 610 |
|----------|----------|



| CATEGORY     | A                     | B                     | C                       | D                       |
|--------------|-----------------------|-----------------------|-------------------------|-------------------------|
| LPV DA       | 944-1¼ 334 (400-1¼)   |                       |                         |                         |
| LNAV/VNAV DA | 986-1¼ 376 (400-1¼)   |                       |                         |                         |
| LNAV MDA     | 980-1 370 (400-1)     |                       |                         | 980-1¼<br>370 (400-1¼)  |
| CIRCLING     | 1060-1<br>450 (500-1) | 1080-1<br>470 (500-1) | 1080-1½<br>470 (500-1½) | 1300-2¼<br>690 (700-2¼) |

SE-1, 31 OCT 2024 to 28 NOV 2024

SE-1, 31 OCT 2024 to 28 NOV 2024