

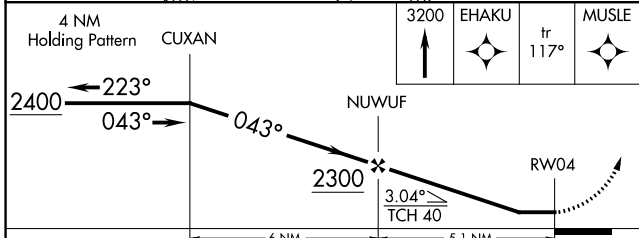
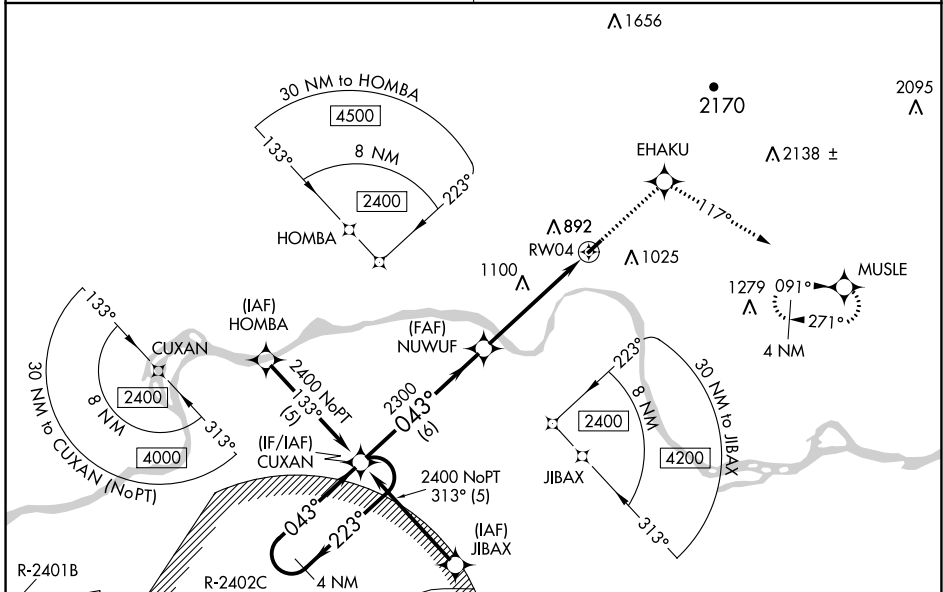
APP CRS	Rwy Idg	3302
043°	TDZE	648
	Apt Elev	648

RNAV (GPS) RWY 4

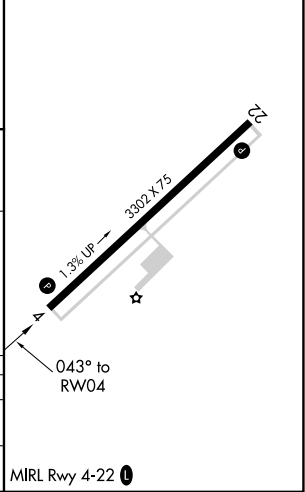
OZARK/FRANKLIN COUNTY (7M5)

▼ DME/DME RNP-0.3 NA. Visibility reduction by helicopters NA. Use Fort Smith altimeter setting; when not received, use Drake Fld altimeter setting and increase all MDAs 80 feet; increase LNAV Cat A/C and Circling Cat C visibility ¼ SM.
▲ NA MISSED APPROACH: Climb to 3200 direct EHAKU and on track 117° to MUSLE and hold.

RAZORBACK APP CON ★ 120.9 343.75	UNICOM 122.8 (CTAF) 0
--	---------------------------------



ELEV 648	TDZE 648
----------	----------



CATEGORY	A	B	C	D
LNAV MDA	1480-1 832 (900-1)	1480-1¼ 832 (900-1¼)	1480-2½ 832 (900-2½)	NA
CIRCLING	1480-1¼ 832 (900-1¼)		1500-2½ 852 (900-2½)	NA

SC-1, 31 OCT 2024 to 28 NOV 2024

SC-1, 31 OCT 2024 to 28 NOV 2024