

VOR/DME IOW 116.2 Chan 109	APP CRS 006°	Rwy Idg 4000 TDZE 752 Apt Elev 754
--	------------------------	---

VOR RWY 36

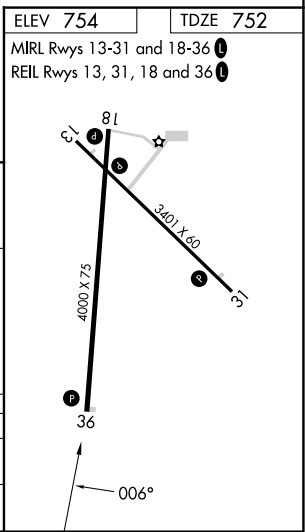
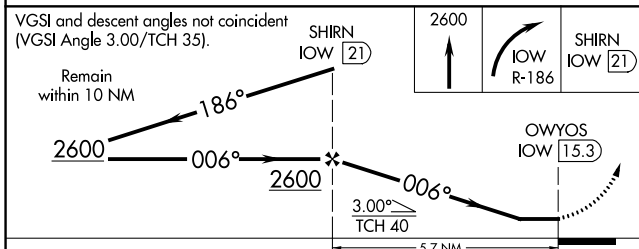
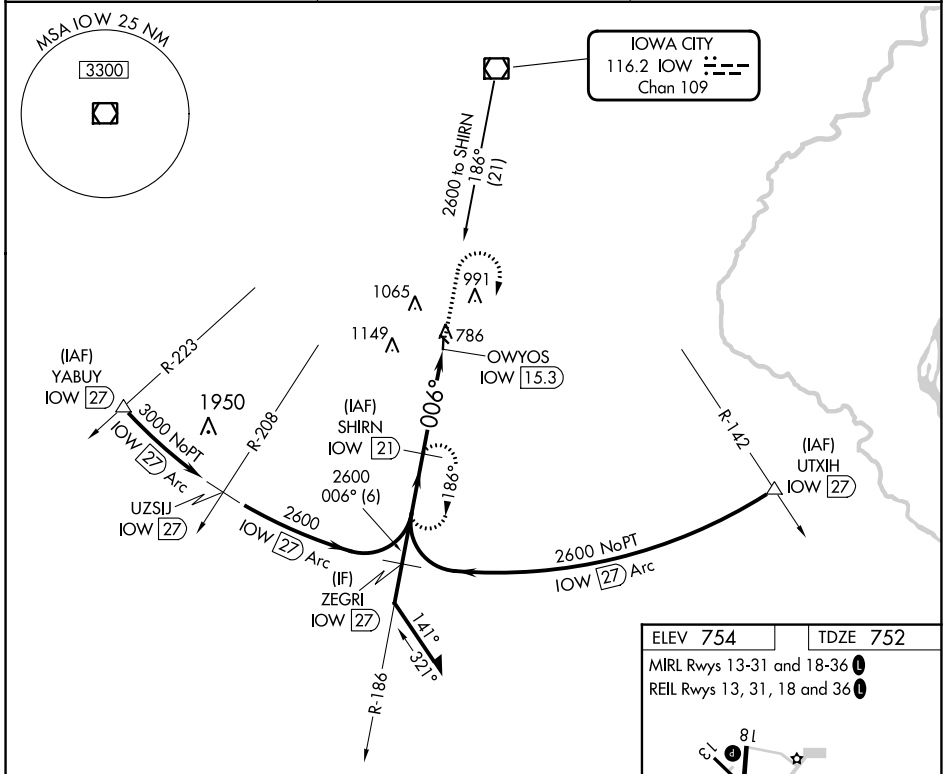
WASHINGTON MUNI (A WG)

DME Required.

⚠ When local altimeter setting not received, use Iowa City altimeter setting and increase all MDAs 80 feet and visibility S-36 Cat C and Circling Cat C 1/4 SM.

MISSED APPROACH: Climb to 2600 then right turn on IOW VOR/DME R-186 to SHIRN/21 DME and hold.

AWOS-3 127.825	CHICAGO CENTER 135.6 370.95	UNICOM 122.7 (CTAF) 0
--------------------------	---------------------------------------	---------------------------------



CATEGORY	A	B	C	D
S-36	1240-1	488 (500-1)	1240-1 $\frac{3}{8}$ 488 (500-1 $\frac{3}{8}$)	NA
C CIRCLING	1240-1 486 (500-1)	1260-1 506 (600-1)	1500-2 $\frac{1}{4}$ 746 (800-2 $\frac{1}{4}$)	NA

NC-3, 31 OCT 2024 to 28 NOV 2024

NC-3, 31 OCT 2024 to 28 NOV 2024