

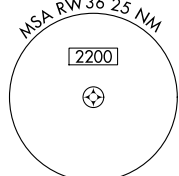
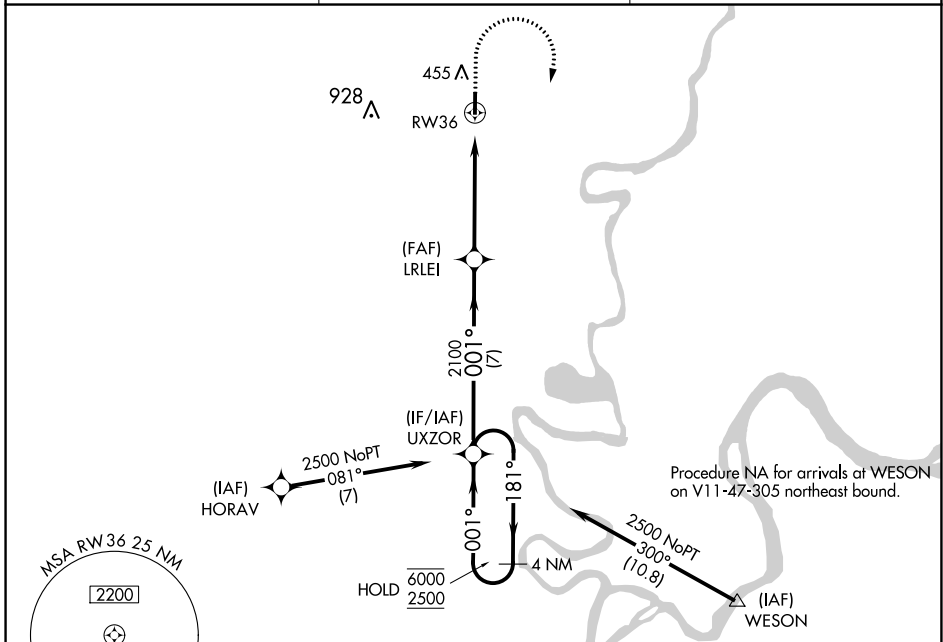
WAAS CH <b>77625</b> <b>W36A</b>	APP CRS <b>001°</b>	Rwy Idg TDZE Apt Elev	<b>4000</b> <b>386</b> <b>388</b>
--	------------------------	-----------------------------	---

# RNAV (GPS) RWY 36

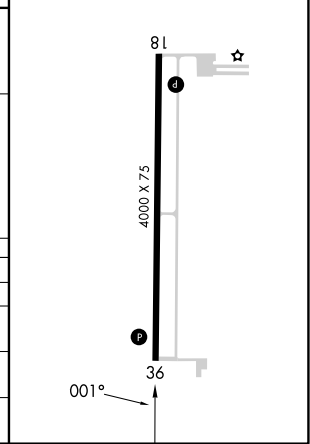
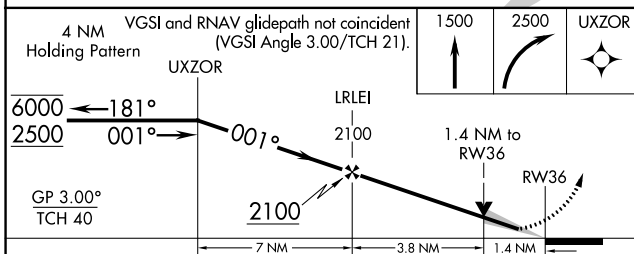
CARMI MUNI (CUL)

RNP APCH - GPS.	MISSED APPROACH: Climb to 1500 then climbing right turn to 2500 direct UXZOR and hold.
<b>▽</b> For uncompensated Baro-VNAV systems, LNAV/VNAV NA below -19°C or above 54°C.	

AWOS-3 <b>118.425</b>	EVANSVILLE APP CON * <b>127.35 343.7</b>	UNICOM <b>122.8</b> (CTAF) <b>①</b>
--------------------------	---	--



ELEV 388	TDZE 386
REIL Rwy 36 <b>①</b>	
MIRL Rwy 18-36 <b>①</b>	



CATEGORY	A	B	C	D
LPV DA	636-3/4	250 (300-3/4)		NA
LNAV/VNAV DA	796-1 1/8	410 (500-1 1/8)		NA
LNAV MDA	860-1	474 (500-1)	860-1 3/8 474 (500-1 3/8)	NA
<b>C</b> CIRCLING	860-1	472 (500-1)	1000-1 3/4 612 (700-1 3/4)	NA

EC-3, 31 OCT 2024 to 28 NOV 2024

EC-3, 31 OCT 2024 to 28 NOV 2024