

RNAV (GPS) RWY 36

SHELBY COUNTY (2H(0))

APP CRS	Rwy Idg	4098
002°	TDZE	619
	Apt Elev	619

RNP APCH - GPS.

▽ Circling NA to Rws 4, 14, 22, and 32. Use Decatur altimeter setting, when not received use Mattoon/Charleston altimeter setting and increase all MDAs 20 feet, and Circling Cat C visibility ¼ SM. Rwy 36 helicopter visibility reduction below 1 SM NA. Straight-in and Circling Rwy 36 NA at night.

MISSED APPROACH:
Climbing left turn to 2400 direct EROXY and hold.

DEC ASOS

126.35

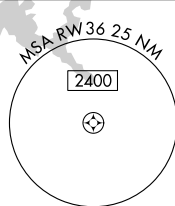
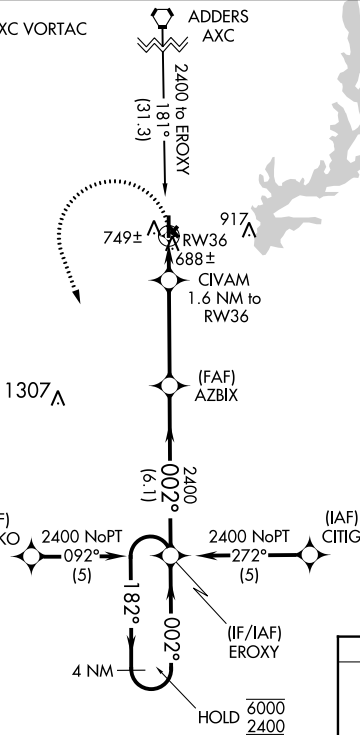
KANSAS CITY CENTER

124.3 269.15

UNICOM

122.8 (CTAF) 0

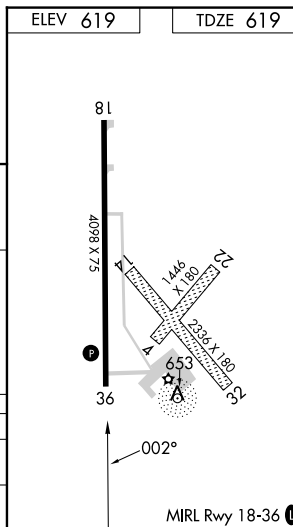
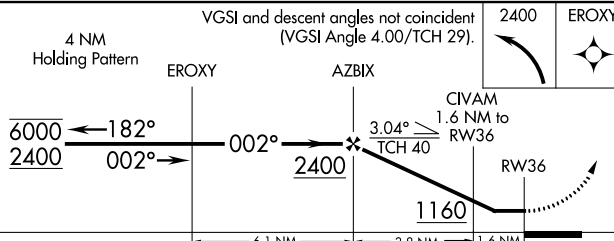
Procedure NA for arrival on AXC VORTAC airway radials 098 CW 217.



EC-3, 31 OCT 2024 to 28 NOV 2024

EC-3, 31 OCT 2024 to 28 NOV 2024

ELEV 619	TDZE 619
----------	----------



CATEGORY	A	B	C	D
LNVA MDA	1080-1	461 (500-1)	1080-1 3/8 461 (500-1 3/8)	NA
C CIRCLING	1280-1	661 (700-1)	1340-2 721 (800-2)	NA