

APP CRS	Rwy Idg	2901
167°	TDZE	574
	Apt Elev	574

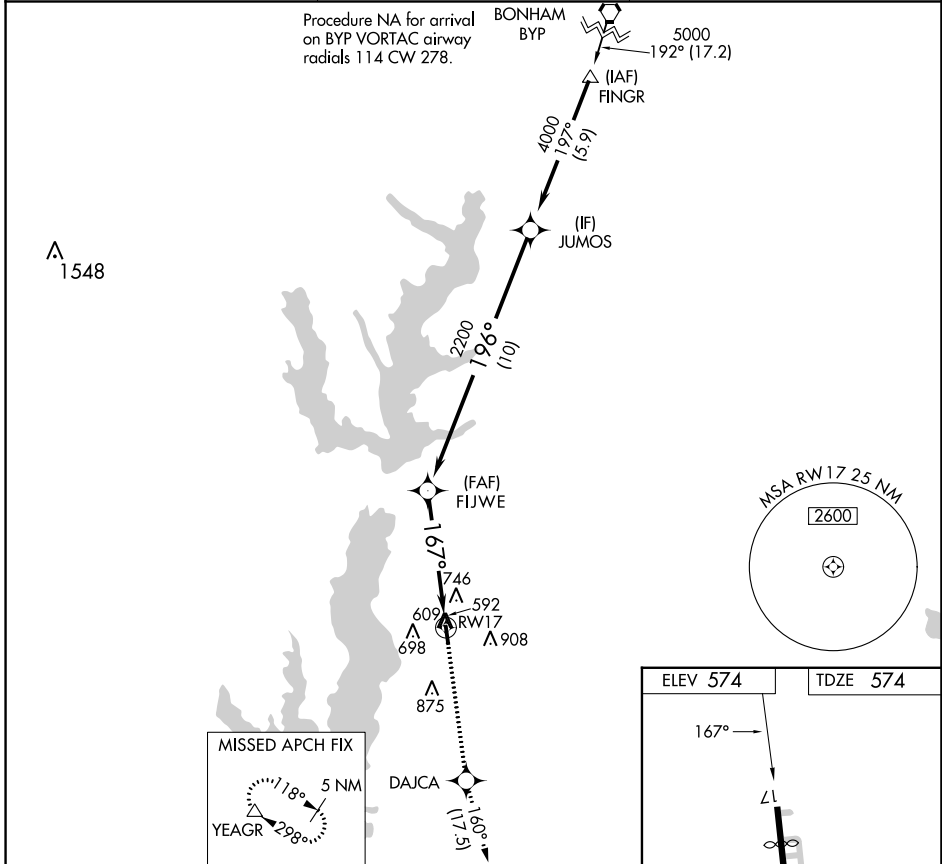
RNAV (GPS) RWY 17

RALPH M HALL/ROCKWALL MUNI (F46)

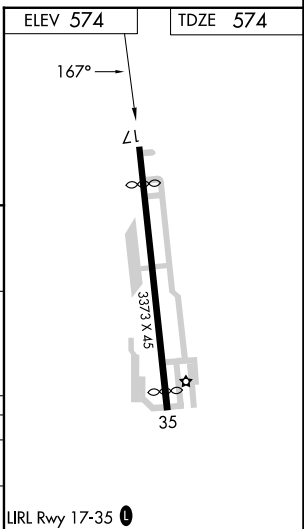
⚠ DME/DME RNP-0.3 NA. When local altimeter setting not received, use Dallas Love Fld altimeter setting and increase all MDA 80 feet. Helicopter visibility reduction below 1 SM NA. Procedure NA at night.

MISSED APPROACH: Climb to 5000 direct DAJCA and on track 160° to YEAGR and hold.

AWOS-3PT 121.25	LONE STAR APP CON 124.3 282.275	UNICOM 122.8 (CTAF) 0
---------------------------	-------------------------------------------	---------------------------------



JUMOS	5000	DAJCA	tr 160°	YEAGR
4000	↑	⬠		△
	FIJWE	3.00°	TCH 40 RW17	
	2200	167°		
10 NM		5 NM		
CATEGORY	A	B	C	D
LNAV MDA	1140-1	566 (600-1)	NA	
CIRCLING	1280-1	706 (800-1)	NA	



SC-2, 31 OCT 2024 to 28 NOV 2024

SC-2, 31 OCT 2024 to 28 NOV 2024