

APP CRS	Rwy Idg	N/A
184°	TDZE	N/A
	Apt Elev	1179

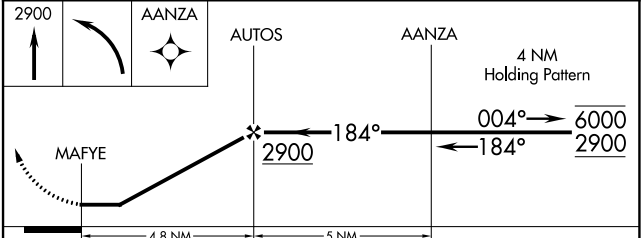
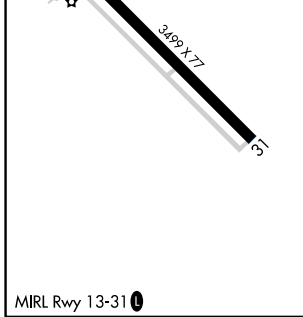
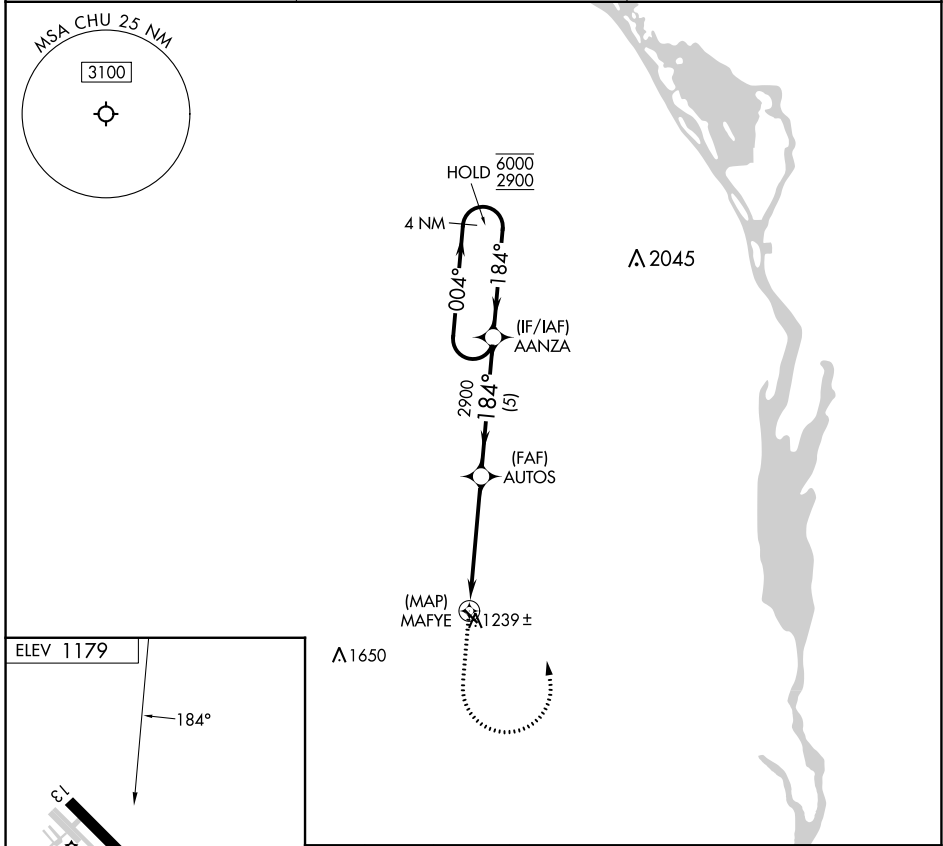
RNAV (GPS)-B

HOUSTON COUNTY (CHU)

RNP APCH - GPS.
 Procedure NA at night. Rwy 13 and 31 helicopter visibility reduction below 1 SM NA. Use La Crosse Rgnl altimeter setting.

MISSED APPROACH: Climb to 2900 then left turn direct AANZA and hold.

LSE ASOS 124.95	MINNEAPOLIS CENTER 128.6 363.0	CTAF 122.9 0
---------------------------	--	------------------------



CATEGORY	A	B	C	D
CIRCLING	1820-1	641 (700-1)	NA	

NC-1, 31 OCT 2024 to 28 NOV 2024

NC-1, 31 OCT 2024 to 28 NOV 2024