

WAAS CH 69431 W05A	APP CRS 049°	Rwy Idg TDZE 166 Apt Elev 166	5254
--	------------------------	---	-------------

RNAV (GPS) RWY 5

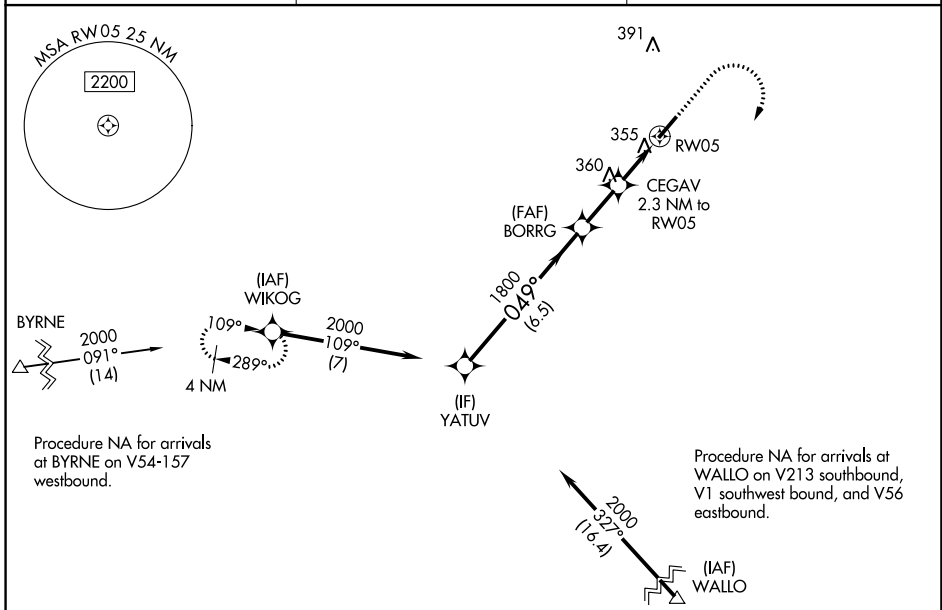
MOUNT OLIVE MUNI (W40)

RNP APCH - GPS.

▽
▲ Rwy 5 helicopter visibility reduction below 3/4 SM NA. When local altimeter setting not received, use Goldsboro altimeter setting.

MISSED APPROACH: Climb to 900 then climbing right turn to 2000 direct WIKOG and hold.

AWOS-3P 120.075	SEYMOUR JOHNSON APP CON* 119.7 273.6	UNICOM 122.8 (CTAF) 0
---------------------------	--	---------------------------------



SE-2, 31 OCT 2024 to 28 NOV 2024

SE-2, 31 OCT 2024 to 28 NOV 2024

ELEV 166		TDZE 166	
748 ▲			
VGSi and RNAV glidepath not coincident (VGSi Angle 3.50/TCH 43).			
YATUV 2000 GP 3.45° TCH 60		BORRG 1800 CEGAV 2.3 NM to RW05	
049° 1800 6.5 NM		1060 2 NM 2.3 NM RW05	
CATEGORY	A	B	D
LPV DA	625-1 ³ / ₈ 459 (500-1 ³ / ₈)		NA
LNAV MDA	640-1	474 (500-1)	640-1 ³ / ₈ 474 (500-1 ³ / ₈)
CIRCLING	700-1	534 (600-1)	720-1 ¹ / ₂ 554 (600-1 ¹ / ₂)

900

2000

WIKOG