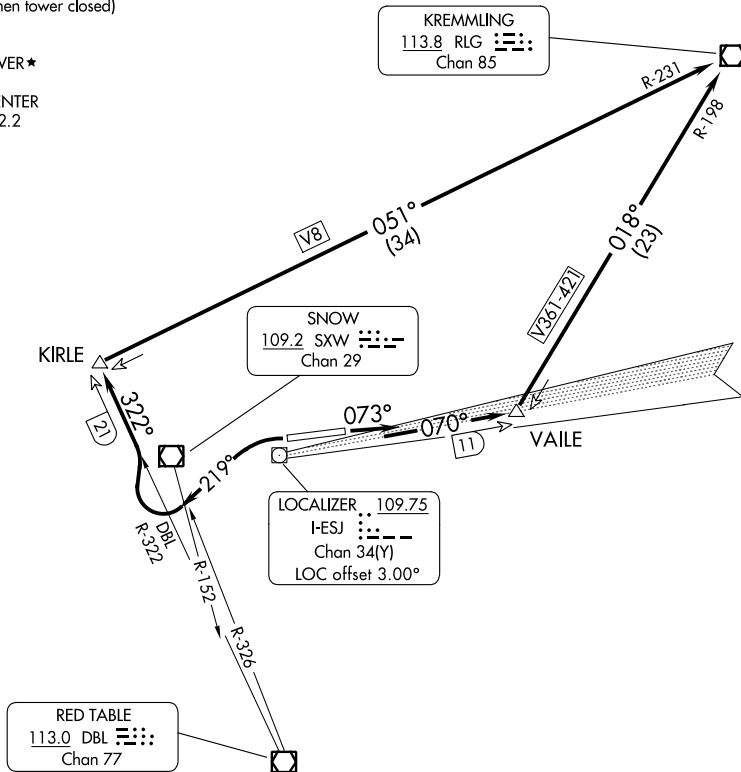


ATIS  
 135.575  
 CLNC DEL  
 124.75  
 DENVER CLNC DEL  
 124.75 (When tower closed)  
 GND CON  
 121.8  
 EAGLE TOWER ★  
 119.8  
 DENVER CENTER  
 128.65 282.2



SW-1, 31 OCT 2024 to 28 NOV 2024

SW-1, 31 OCT 2024 to 28 NOV 2024

### TAKEOFF MINIMUMS

Rwy 7: Standard with minimum climb of 580' per NM to 12000.

Rwy 25: Standard with minimum climb of 815' per NM to 9200.

NOTE: Chart not to scale.



### DEPARTURE ROUTE DESCRIPTION

**TAKEOFF RUNWAY 7:** Climb heading 073° and I-ESJ east course to VAILE INT/I-ESJ 11 DME then left turn on RLG R-198 to RLG VOR/DME.

**TAKEOFF RUNWAY 25:** Climbing left turn heading 219°, until crossing SXW R-152 or DBL R-326, then turn right on DBL R-322 to KIRLE INT/DBL 21 DME then turn right on RLG R-231 to RLG VOR/DME.