

APP CRS	Rwy Idg	<b>8000</b>
<b>253°</b>	TDZE	<b>6540</b>
	Apt Elev	<b>6547</b>


# RNAV (RNP) X RWY 25

EAGLE COUNTY RGNL (EGE)

RNP AR APCH-GPS, RF, MIN RNP 0.13. Authorization required. Missed approach requires RNP <1.00.

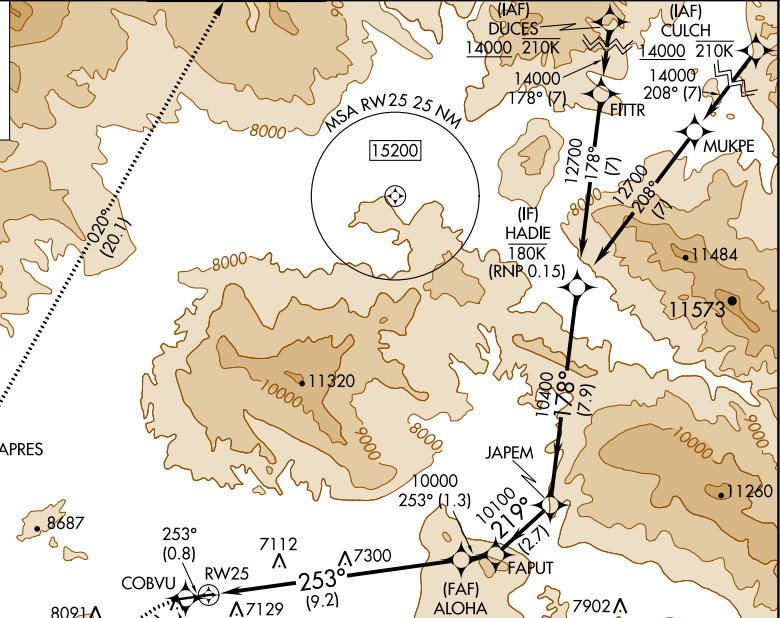
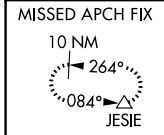
When local climeter setting not received, procedure NA. For uncompensated Baro-VNAV systems, procedure NA below -27°C or above 33°C. For inop ALS increase RNP 0.13 all visibilities to 1% SM.

**MALSR**

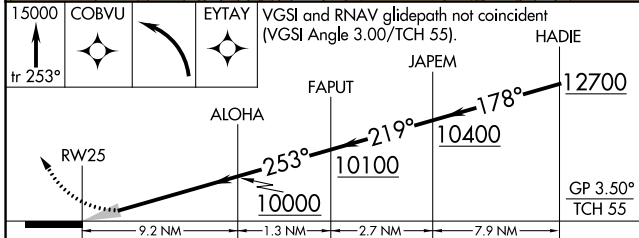


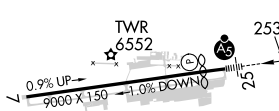
**MISSED APPROACH:** (Do not exceed 185K until HARNA) Climb to 15000 on the RNAV missed approach route to JESIE and hold.  
\*Missed approach requires minimum climb of 269 feet per NM to 8700.

ATIS	DENVER CENTER	EAGLE TOWER *	GND CON	CLNC DEL	DENVER CLNC DEL
<b>135.575</b>	<b>128.65 282.2</b>	<b>119.8 (CTAF)</b>	<b>121.8</b>	<b>124.75</b>	<b>124.75</b> (When tower closed)



ELEV 6547	TDZE 6540
-----------	-----------




<p>TWR 6552</p> <p>HIRL Rwy 7-25</p> <p>REIL Rwy 7</p>

CATEGORY	A	B	C	D
RNP 0.13 DA*	NA		6937-5/8	397 (400-5/8)
RNP 0.13 DA	NA		7204-1 1/2	664 (700-1 1/2)

## AUTHORIZATION REQUIRED

SW-1, 31 OCT 2024 to 28 NOV 2024

SW-1, 31 OCT 2024 to 28 NOV 2024